

Datasheet for ABIN1314736

PFKFB2 Protein (AA 406-505) (GST tag)



[Go to Product page](#)

1 Image

Overview

Quantity:	2 µg
Target:	PFKFB2
Protein Characteristics:	AA 406-505
Origin:	Human
Source:	Wheat germ
Protein Type:	Recombinant
Purification tag / Conjugate:	This PFKFB2 protein is labelled with GST tag.
Application:	ELISA, Western Blotting (WB), Affinity Purification (AP), Antibody Array (AA)

Product Details

Purpose:	PFKFB2 (Human) Recombinant Protein (Q01)
Sequence:	GADELPYLRC PLHTIFKLTP VAYGCKVETI KLNVEAVNTH RDKPTNNFPK NQTPVRMRRN SFTPLSSSNT IRRPRNYSVG SRPLKPLSPL RAQDMQEGAD
Characteristics:	Human PFKFB2 partial ORF (NP_006203, 406 a.a. - 505 a.a.) recombinant protein with GST-tag at N-terminal.
Purification:	in vitro wheat germ expression system

Target Details

Target:	PFKFB2
Alternative Name:	PFKFB2 (PFKFB2 Products)

Target Details

Background:	Gene: 6-phosphofructo-2-kinase/fructose-2,6-biphosphatase 2 Synonyms: DKFZp781D2217, MGC138308, MGC138310, PFK-2/FBPase-2
Gene ID:	5208
NCBI Accession:	NM_006212
Pathways:	PI3K-Akt Signaling , Positive Regulation of Peptide Hormone Secretion , Regulation of Carbohydrate Metabolic Process

Application Details

Application Notes:	Optimal working dilution should be determined by the investigator.
Restrictions:	For Research Use only

Handling

Buffer:	50 mM Tris-HCl, 10 mM reduced Glutathione, pH =8.0 in the elution buffer.
Handling Advice:	Aliquot to avoid repeated freezing and thawing.
Storage:	-80 °C
Storage Comment:	Best use within three months from the date of receipt of this protein.

Images

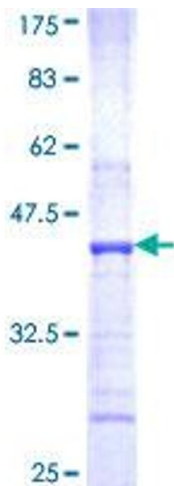


Image 1.