



Datasheet for ABIN1314793
PGBD4 Protein (AA 1-585) (GST tag)



[Go to Product page](#)

1 Image

Overview

Quantity:	25 µg
Target:	PGBD4
Protein Characteristics:	AA 1-585
Origin:	Human
Source:	Wheat germ
Protein Type:	Recombinant
Purification tag / Conjugate:	This PGBD4 protein is labelled with GST tag.
Application:	ELISA, Western Blotting (WB), Affinity Purification (AP), Antibody Array (AA)

Product Details

Purpose:	PGBD4 (Human) Recombinant Protein (P01)
Sequence:	<p>MSNPRKRSIP MRDSNTGLEQ LLAEDSFDES DFSEIDSDN FSDSALEADK IRPLSHLESD GKSSTSSDSG RSMKWSARAM IPRQRYDFTG TPGRKVDVSD ITDPLQYFEL FFTEELVSKI TRETNAQAAL LASKPPGPKG FSRMDKWKDT DNDELKVFFA VMLLQGIVQK PELEMFWSTR PLLDTPYLRQ IMTGERFLLL FRCLHFVNNS SISAGQSKAQ ISLQKIKPVF DFLVNFSTV YTPNRNIAVD ESLMLFKGPL AMKQYLPTKR VRFGLKLYVL CESQSGYVWN ALVHTGPGMN LKDSADGLKS SRIVLTLVND LLGQGYCVFL DNFNISPMLF RELHQNRTDA VGTARLNRKQ IPNDLKKRIA KGTTVARFCG ELMALKWCDG KEVTMLSTFH NDTVIEVNNR NGKKTKRPRV IVDYNENMGA VDSADQMLTS YPSEKRHKV WYKFFHLL HITVLNSYIL FKKDNPEHTM SHINFRLLAI ERMLEKHHKP GQQLRGRPC SDDVTPLRLS GRHFPKSIPA TSGKQNPTGR CKICCSQYDK DGKKIRKETR YFCAECDVPL CVVPCFEIYH TKKNY</p>
Characteristics:	Human PGBD4 full-length ORF (NP_689808.2, 1 a.a. - 585 a.a.) recombinant protein with GST-

Product Details

tag at N-terminal.

Purification: in vitro wheat germ expression system

Target Details

Target: PGBD4

Alternative Name: PGBD4 ([PGBD4 Products](#))

Background: Full Gene Name: piggyBac transposable element derived 4
Synonyms: FLJ32638,FLJ37497

Gene ID: 161779

NCBI Accession: [NM_152595](#)

Application Details

Application Notes: Optimal working dilution should be determined by the investigator.

Comment: Preparation method: in vitro, wheat germ expression system
Product Quality tested by: 12.5% SDS-PAGE Stained with Coomassie Blue.

Restrictions: For Research Use only

Handling

Buffer: 50 mM Tris-HCl, 10 mM reduced Glutathione, pH =8.0 in the elution buffer.

Handling Advice: Aliquot to avoid repeated freezing and thawing.

Storage: -80 °C

Storage Comment: Best use within three months from the date of receipt of this protein.

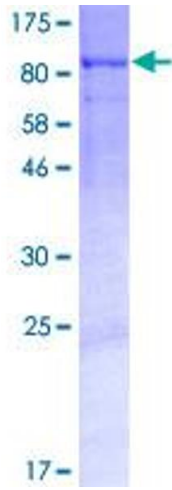


Image 1.