



[Go to Product page](#)

Datasheet for ABIN1314798

PGD Protein (AA 1-483) (GST tag)

1 Image

Overview

Quantity:	10 µg
Target:	PGD
Protein Characteristics:	AA 1-483
Origin:	Human
Source:	Wheat germ
Protein Type:	Recombinant
Purification tag / Conjugate:	This PGD protein is labelled with GST tag.
Application:	ELISA, Western Blotting (WB), Affinity Purification (AP), Antibody Array (AA)

Product Details

Purpose:	PGD (Human) Recombinant Protein (P01)
Sequence:	MAQADIALIG LAVMGQNLIL NMNDHGFVVC AFNRTVSKVD DFLANEAKGT KVVGAQSLKE MVSCLKKPRR IILLVKAGQA VDDFIEKLVP LLDTGDIID GGNSEYRDTT RRCRDLKAKG ILFVSGVSG GEEGARYGPS LMPGGNKEAW PHIKTIFQGI AAKVGTGEPD CDWVGDEGAG HFVKMVHNGI EYGDMQLICE AYHLMKDVLG MAQDEMAQAF EDWNKTELDS FLIEITANIL KFQDTDGKHL LPKIRDSAGQ KGTGKWTAIS ALEYGVPVTL IGEAVFARCL SSLKDERIQA SKKLGKPKF QFDGDKKSFL EDIRKALYAS KIISYAQGFMLLRQAATEFG WTLNYGGIAL MWRGGCIIRS VFLGKIKDAF DRNPELQNL LDDFFKSAVE NCQDSWRRRAV STGVQAGIPM PCFTTALSFY DGYRHEMLPA SLIQAQRDYF GAHTYELLA PGQFIHTNWT GHGGTVSSSS YNA
Characteristics:	Human PGD full-length ORF (AAH00368, 1 a.a. - 483 a.a.) recombinant protein with GST-tag at N-terminal.

Product Details

Purification: in vitro wheat germ expression system

Target Details

Target: PGD

Alternative Name: PGD ([PGD Products](#))

Background: Full Gene Name: phosphogluconate dehydrogenase
Synonyms: 6PGD

Gene ID: 5226

Application Details

Application Notes: Optimal working dilution should be determined by the investigator.

Comment: Preparation method: in vitro, wheat germ expression system
Product Quality tested by: 12.5% SDS-PAGE Stained with Coomassie Blue.

Restrictions: For Research Use only

Handling

Buffer: 50 mM Tris-HCl, 10 mM reduced Glutathione, pH =8.0 in the elution buffer.

Handling Advice: Aliquot to avoid repeated freezing and thawing.

Storage: -80 °C

Storage Comment: Best use within three months from the date of receipt of this protein.

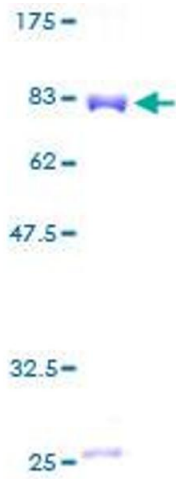


Image 1.