



[Go to Product page](#)

Datasheet for ABIN1314808

## PGK1 Protein (AA 1-417) (GST tag)

### 1 Image

#### Overview

|                               |   |
|-------------------------------|---|
| Quantity:                     | 10 µg   |
| Target:                       | PGK1  |
| Protein Characteristics:      | AA 1-417  |
| Origin:                       | Human   |
| Source:                       | Wheat germ  |
| Protein Type:                 | Recombinant   |
| Purification tag / Conjugate: | This PGK1 protein is labelled with GST tag.                                   |
| Application:                  | ELISA, Western Blotting (WB), Affinity Purification (AP), Antibody Array (AA) |

#### Product Details

|                  |   |
|------------------|---|
| Purpose:         | PGK1 (Human) Recombinant Protein (P01)  |
| Sequence:        | <p>MSLSNKLTLKLDVKGKRWV MRVDFNVPMK NNQITNNQRI KAAVPSIKFC LDNGAKSVVL<br/>MSHLGRPDGV PMPDKYSLEP VAVELKSLG KDVLFKDCV GPEVEKACAN PAAGSVILLE<br/>NLRFHVEEEG KGKDASGNKV KAEPKIEAF RASLSKLGDV YVNDAFGTAH RAHSSMVGVN<br/>LPQKAGGFLM KKELNYFAKA LESPFPFLA ILGGAKVADK IQLINMLDK VNEMIIGGGM<br/>AFTFLKVLNN MEIGTSLFDE EGAKIVKDLMSKAEKNGVKI TLPVDFVTAD KFDENAKTGQ<br/>ATVASGIPAG WMGLDCGPES SKKYAEAVTR AKQIVWNGPV GVFEWEAFAR GTKALMDEVV<br/>KATSRGCITI IGGGDTATCC AKWNTEDKVS HVSTGGGASL ELLEGKVLPG VDALSNI</p> |
| Characteristics: | Human PGK1 full-length ORF ( NP_000282.1, 1 a.a. - 417 a.a.) recombinant protein with GST-tag at N-terminal.  |
| Purification:    | in vitro wheat germ expression system   |

## Target Details

|                   |   |
|-------------------|---|
| Target:           | PGK1  |
| Alternative Name: | PGK1 ( <a href="#">PGK1 Products</a> )  |
| Background:       | Full Gene Name: phosphoglycerate kinase 1<br>Synonyms: MGC117307,MGC142128,MGC8947,MIG10,PGKA |
| Gene ID:          | 5230  |
| NCBI Accession:   | <a href="#">NM_000291</a>   |
| Pathways:         | <a href="#">Cellular Glucan Metabolic Process</a>   |

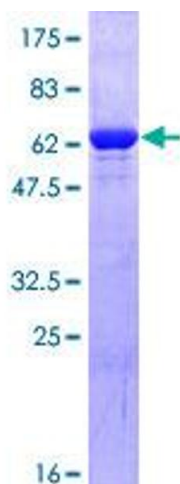
## Application Details

|                    |  |
|--------------------|--|
| Application Notes: | Optimal working dilution should be determined by the investigator.   |
| Comment:           | Preparation method: in vitro, wheat germ expression system<br>Product Quality tested by: 12.5% SDS-PAGE Stained with Coomassie Blue. |
| Restrictions:      | For Research Use only  |

## Handling

|                  |   |
|------------------|---|
| Buffer:          | 50 mM Tris-HCl, 10 mM reduced Glutathione, pH =8.0 in the elution buffer. |
| Handling Advice: | Aliquot to avoid repeated freezing and thawing.                           |
| Storage:         | -80 °C  |
| Storage Comment: | Best use within three months from the date of receipt of this protein.    |

## Images



**Image 1.**