



[Go to Product page](#)

Datasheet for ABIN1314810

PGK1 Protein (AA 321-417) (GST tag)

1 Image

Overview

Quantity:	10 µg
Target:	PGK1
Protein Characteristics:	AA 321-417
Origin:	Human
Source:	Wheat germ
Protein Type:	Recombinant
Purification tag / Conjugate:	This PGK1 protein is labelled with GST tag.
Application:	ELISA, Western Blotting (WB), Affinity Purification (AP), Antibody Array (AA)

Product Details

Purpose:	PGK1 (Human) Recombinant Protein (Q01)
Sequence:	SKKYAEAVTR AKQIVWNGPV GVFEWEAFAR GTKALMDEVV KATSRGCITI IGGDTATCC AKWNTEDKVS HVSTGGGASL ELLEGKVLPG VDALSNI
Characteristics:	Human PGK1 partial ORF (NP_000282, 321 a.a. - 417 a.a.) recombinant protein with GST-tag at N-terminal.
Purification:	in vitro wheat germ expression system

Target Details

Target:	PGK1
Alternative Name:	PGK1 (PGK1 Products)

Target Details

Background:	Full Gene Name: phosphoglycerate kinase 1 Synonyms: MGC117307,MGC142128,MGC8947,MIG10,PGKA
Gene ID:	5230
NCBI Accession:	NM_000291
Pathways:	Cellular Glucan Metabolic Process

Application Details

Application Notes:	Optimal working dilution should be determined by the investigator.
Comment:	Preparation method: in vitro, wheat germ expression system Product Quality tested by: 12.5% SDS-PAGE Stained with Coomassie Blue.
Restrictions:	For Research Use only

Handling

Buffer:	50 mM Tris-HCl, 10 mM reduced Glutathione, pH =8.0 in the elution buffer.
Handling Advice:	Aliquot to avoid repeated freezing and thawing.
Storage:	-80 °C
Storage Comment:	Best use within three months from the date of receipt of this protein.

Images

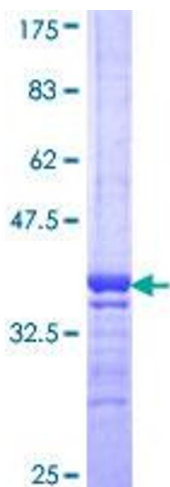


Image 1.