

Datasheet for ABIN1314847  
**PGS1 Protein (AA 1-447) (GST tag)**



[Go to Product page](#)

1 Image

## Overview

Quantity:	10 µg
Target:	PGS1
Protein Characteristics:	AA 1-447
Origin:	Human
Source:	Wheat germ
Protein Type:	Recombinant
Purification tag / Conjugate:	This PGS1 protein is labelled with GST tag.
Application:	ELISA, Western Blotting (WB), Affinity Purification (AP), Antibody Array (AA)

## Product Details

Purpose:	PGS1 (Human) Recombinant Protein (P01)
Sequence:	<p>MKGQIRVAKR RVMASLYLG TGPLEQELVD CLESTLEKSL QAKFPSNLKV SILLDFTRGS</p> <p>RGRKNSRTML LPLLRFPPEQ VRVSLFHTPH LRGLLRLLIP ERFNETIGLQ HIKVYLFDNS</p> <p>VILSGANLSD SYFTNRQDRY VFLQDCAEIA DFFTELVDVAV GDVSLQLQGD DTVQVVDGMV</p> <p>HPYKGDRAEY CKAANKRVMD VINSARTRQQ MLHAQTFHSN SLLTQEDAAA AGDRRPAPDT</p> <p>WIYPLIQMKP FEIQIDEIVT ETLLEAERG AKVYLTTGYF NLTQAYMDLV LGTRAEYQIL</p> <p>LASPEVNGFF GAKGVAGAIP AAYVHIERQF FSEVCSLGQQ ERVQLQEYWR RGWTFHAKGL</p> <p>WLYLAGSSLP CLTLIGSPNF GYRSVHRDLE AQIAVTENQ ALQQQLHQEQ EQLYLRSQVW</p> <p>SSATFEQPSR QVKLWVKMVT PLIKNFF</p>
Characteristics:	Human PGS1 full-length ORF ( ENSP00000262764, 1 a.a. - 447 a.a.) recombinant protein with GST-tag at N-terminal.

## Product Details

---

Purification: in vitro wheat germ expression system

## Target Details

---

Target: PGS1

Alternative Name: PGS1 ([PGS1 Products](#))

Background: Full Gene Name: phosphatidylglycerophosphate synthase 1  
Synonyms: DKFZp762M186,MGC131960

Gene ID: 9489

## Application Details

---

Application Notes: Optimal working dilution should be determined by the investigator.

Comment: Preparation method: in vitro, wheat germ expression system  
Product Quality tested by: 12.5% SDS-PAGE Stained with Coomassie Blue.

Restrictions: For Research Use only

## Handling

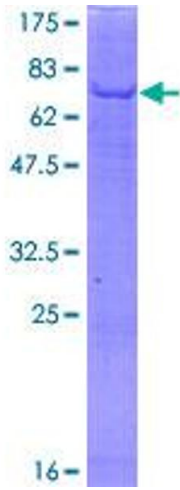
---

Buffer: 50 mM Tris-HCl, 10 mM reduced Glutathione, pH =8.0 in the elution buffer.

Handling Advice: Aliquot to avoid repeated freezing and thawing.

Storage: -80 °C

Storage Comment: Best use within three months from the date of receipt of this protein.



**Image 1.**