

Datasheet for ABIN1314850
PHACTR2 Protein (GST tag)



[Go to Product page](#)

1 Image

Overview

Quantity:	10 µg
Target:	PHACTR2
Origin:	Human
Source:	Wheat germ
Protein Type:	Recombinant
Purification tag / Conjugate:	This PHACTR2 protein is labelled with GST tag.
Application:	ELISA, Western Blotting (WB), Affinity Purification (AP), Antibody Array (AA)

Product Details

Purpose:	PHACTR2 (Human) Recombinant Protein (P01)
Sequence:	<p>MDNAVDGLDK ASIANS DGPT AGSQT PPFKR KGKLS TIGKI FKPWK WRKKK TSDKFRE TSA</p> <p>VLERKISTRQ SREELIRRGV LKELPDQDGD VTVNFENSNG HMIPIGEEST REENVVKSEE</p> <p>GNGSVSEKTP PLEEQAEDKK ENTENHSETP AAPALPPSAP PKPRSKPKPK KSPVPPKGAT</p> <p>AGASHKGDEV PPIKNTKAP GKQAPVPPPK PASRNTTREA AGSSH SKKTT GSKASASPST</p> <p>SSTSSRPKAS KETVSSKAGT VGTTKGKRKT DKQPITSHLS SDTTTSGTSD LKGEP AETRV</p> <p>ESFKLEQTVP GAEEQNTGKF KSMVPPPPVA PAPSPLAPPL PLEDQCITAS DTPVVLVSVG</p> <p>ADLPVSALDP SLLWAEPT NRTTLYSGTG LSVNRENAKC FTTKEELGKT VPQLLTPGLM</p> <p>GESSEFSAS EDEGHREYQA NDSDS DGPI L YTDDEDEDED EDGSGESALA SKIRRRDTLA</p> <p>IKLGNRPSKK ELEDKNILQR TSEEERQEIR QQIGTKLVRR LSQRPTTEEL EQRNILKQKN</p> <p>EEEEQAKME LKRRLSRKLS LRPTVAELQA RRILRFNEYV EVTDSPDYDR RADKPWARLT</p> <p>PADKAAIRKE LNEFKSTEME VHEESRQFTR FHRP</p>
Characteristics:	Human PHACTR2 full-length ORF (NP_055536.1, 1 a.a. - 634 a.a.) recombinant protein with

Product Details

GST-tag at N-terminal.

Purification: in vitro wheat germ expression system

Target Details

Target: PHACTR2

Alternative Name: PHACTR2 ([PHACTR2 Products](#))

Background: Gene: phosphatase and actin regulator 2
Synonyms: C6orf56, DKFZp686F18175, KIAA0680, MGC176642

Gene ID: 9749

NCBI Accession: [NM_014721](#)

Application Details

Application Notes: Optimal working dilution should be determined by the investigator.

Restrictions: For Research Use only

Handling

Buffer: 50 mM Tris-HCl, 10 mM reduced Glutathione, pH =8.0 in the elution buffer.

Handling Advice: Aliquot to avoid repeated freezing and thawing.

Storage: -80 °C

Storage Comment: Best use within three months from the date of receipt of this protein.

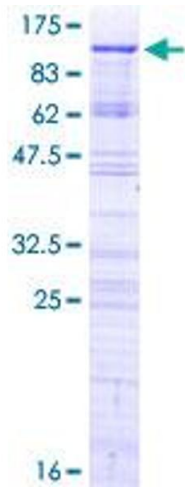


Image 1.