



[Go to Product page](#)

Datasheet for ABIN1314894

PHF21B Protein (AA 1-531) (GST tag)

1 Image

Overview

Quantity:	10 µg
Target:	PHF21B
Protein Characteristics:	AA 1-531
Origin:	Human
Source:	Wheat germ
Protein Type:	Recombinant
Purification tag / Conjugate:	This PHF21B protein is labelled with GST tag.
Application:	ELISA, Western Blotting (WB), Affinity Purification (AP), Antibody Array (AA)

Product Details

Purpose:	PHF21B (Human) Recombinant Protein (P01)
Sequence:	MELQSRPEAL AVELARHQNG DLKKQLHERQ PRIAALSDKQ ALGTITAVPV TGPQVSSLQR LAGQGAAVLP QVRPKTLIPD SLPVAPGRDR PPKQPPTFQK ATVVSVKNPS PALPTANNTV SHVPAPGSQP QALAEPAALA SPLSSAGVAY AIISTSPSNA AAMAPSTAVS VVSDSIKVQP LLISADNKPP PRLLSSPHA THHCPLHPSS LPLTPSPSL SPSPLHGIFQ VIIIQPQVQT QPESTAESRP PTEEPSQGAQ ATKKKKEDRP PTQENPEKIA FMVALGLVTT EHLEEIQSKR QERKRRSTAN PAYSGLLETE RKRLASNYLN NPLFLTARAN EDCWKNEIT HDEHCAACKR GANLQPCGTC PGAYHLSCLE PPLKTAPKGV WVCPRCQKA LKKDEGVPWT GMLAIVHSYV THKTVKEEEK QKLLQRGSEL QNEHQLEER DRRLASAVQK CLELKTSLLA RQRGTQSSLD RLRALLRLIQ GEQLLQVTMT TTSPAPLLAG PWTKPSVAAT HPTVQHPQGH N
Characteristics:	Human PHF21B full-length ORF (NP_612424.1, 1 a.a. - 531 a.a.) recombinant protein with GST-tag at N-terminal.

Product Details

Purification: in vitro wheat germ expression system

Target Details

Target: PHF21B

Alternative Name: PHF21B ([PHF21B Products](#))

Background: Full Gene Name: PHD finger protein 21B
Synonyms: BHC80L,FLJ34161,PHF4

Gene ID: 112885

NCBI Accession: [NM_138415](#)

Application Details

Application Notes: Optimal working dilution should be determined by the investigator.

Comment: Preparation method: in vitro, wheat germ expression system
Product Quality tested by: 12.5% SDS-PAGE Stained with Coomassie Blue.

Restrictions: For Research Use only

Handling

Buffer: 50 mM Tris-HCl, 10 mM reduced Glutathione, pH =8.0 in the elution buffer.

Handling Advice: Aliquot to avoid repeated freezing and thawing.

Storage: -80 °C

Storage Comment: Best use within three months from the date of receipt of this protein.

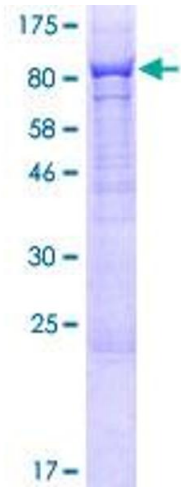


Image 1.