



[Go to Product page](#)

Datasheet for ABIN1314926

PHKG2 Protein (AA 1-406) (GST tag)

1 Image

Overview

Quantity:	10 µg
Target:	PHKG2
Protein Characteristics:	AA 1-406
Origin:	Human
Source:	Wheat germ
Protein Type:	Recombinant
Purification tag / Conjugate:	This PHKG2 protein is labelled with GST tag.
Application:	ELISA, Western Blotting (WB), Affinity Purification (AP), Antibody Array (AA)

Product Details

Purpose:	PHKG2 (Human) Recombinant Protein (P01)
Sequence:	MTLDVGPED E LPDWAAAKEF YQKYDPKDV I GRGVSSVRR CVHRATGHEF AVKIMEVTAE RLSPEQLEEV REATRRETHI LRQVAGHPHI I TLIDSYESS SFMFLVFDLM RKGELFDYLT EKVASEKET RSIMRSLLEA VSFLHANNIV HRDLKPENIL LDDNMQIRLS DFGFSCHLEP GEKLRELCGT PGYLAPEILK CSMDETHPGY GKEVDLWACG VILFTLLAGS PPFWHRRQIL MLRMIMEGQY QFSSPEWDDR SSTVKDLISR LLQVDPEARL TAEQALQHPF FERCEGSQPW NLTPRQRFRV AVWTVLAAGR VALSTHRVRP LTKNALLRDP YALRSVRHLI DNCAFRLYGH VWKKGEQQNR AALFQHRPPG PFPIMGPEEE GDSAAITEDE AVLVLG
Characteristics:	Human PHKG2 full-length ORF (AAH02541.1, 1 a.a. - 406 a.a.) recombinant protein with GST-tag at N-terminal.
Purification:	in vitro wheat germ expression system

Target Details

Target:	PHKG2
Alternative Name:	PHKG2 (PHKG2 Products)
Background:	Full Gene Name: phosphorylase kinase, gamma 2 (testis) Synonyms: GSD9C
Gene ID:	5261
Pathways:	Cellular Glucan Metabolic Process , Regulation of Carbohydrate Metabolic Process

Application Details

Application Notes:	Optimal working dilution should be determined by the investigator.
Comment:	Preparation method: in vitro, wheat germ expression system Product Quality tested by: 12.5% SDS-PAGE Stained with Coomassie Blue.
Restrictions:	For Research Use only

Handling

Buffer:	50 mM Tris-HCl, 10 mM reduced Glutathione, pH =8.0 in the elution buffer.
Handling Advice:	Aliquot to avoid repeated freezing and thawing.
Storage:	-80 °C
Storage Comment:	Best use within three months from the date of receipt of this protein.

Images

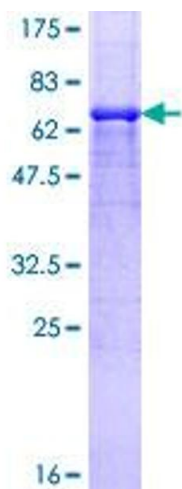


Image 1.