

Datasheet for ABIN1314957  
**PHYHD1 Protein (AA 1-297) (GST tag)**



[Go to Product page](#)

1 Image

## Overview

Quantity:	25 µg
Target:	PHYHD1
Protein Characteristics:	AA 1-297
Origin:	Human
Source:	Wheat germ
Protein Type:	Recombinant
Purification tag / Conjugate:	This PHYHD1 protein is labelled with GST tag.
Application:	ELISA, Western Blotting (WB), Affinity Purification (AP), Antibody Array (AA)

## Product Details

Purpose:	PHYHD1 (Human) Recombinant Protein (P01)
Sequence:	MACLSPSQLQ KFQQDGLVL EGFLSAEECV AMQQRIGEIV AEMDVPLHCR TEFSTQEEEQ LRAQGSTDYF LSSGDKIRFF FEKGVFDEKG NFLVPPEKSI NKIGHALHAH DPVFKSITHS FKVQTLARSL GLQMPVVVQS MYIFKSPLIR TPPSCTRSPW AGCWACGSQW RMPRWRTAVS GSSLAPTPVV CQGGWSGPLL AQLVPASLG QSQPGITASL CPPQCREGPW SSSMEKWYTR ASRTSLTARA RPTLSTSWRP LAPPGARRTG SSQQLNCPFP NCTPKGSRRA GALAPPG
Characteristics:	Human PHYHD1 full-length ORF ( NP_777593.1, 1 a.a. - 297 a.a.) recombinant protein with GST-tag at N-terminal.
Purification:	in vitro wheat germ expression system

## Target Details

Target:	PHYHD1
Alternative Name:	PHYHD1 ( <a href="#">PHYHD1 Products</a> )
Background:	Full Gene Name: phytanoyl-CoA dioxygenase domain containing 1 Synonyms: MGC16638
Gene ID:	254295
NCBI Accession:	<a href="#">NM_174933</a>

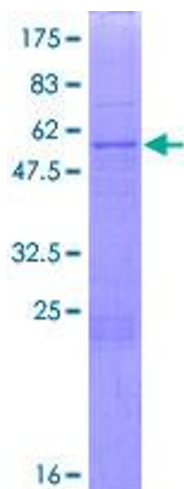
## Application Details

Application Notes:	Optimal working dilution should be determined by the investigator.
Comment:	Preparation method: in vitro, wheat germ expression system Product Quality tested by: 12.5% SDS-PAGE Stained with Coomassie Blue.
Restrictions:	For Research Use only

## Handling

Buffer:	50 mM Tris-HCl, 10 mM reduced Glutathione, pH =8.0 in the elution buffer.
Handling Advice:	Aliquot to avoid repeated freezing and thawing.
Storage:	-80 °C
Storage Comment:	Best use within three months from the date of receipt of this protein.

## Images



**Image 1.**