



[Go to Product page](#)

Datasheet for ABIN1314960

PHYHIPL Protein (AA 1-376) (GST tag)

1 Image

Overview

Quantity:	10 µg
Target:	PHYHIPL
Protein Characteristics:	AA 1-376
Origin:	Human
Source:	Wheat germ
Protein Type:	Recombinant
Purification tag / Conjugate:	This PHYHIPL protein is labelled with GST tag.
Application:	ELISA, Western Blotting (WB), Affinity Purification (AP), Antibody Array (AA)

Product Details

Purpose:	PHYHIPL (Human) Recombinant Protein (P01)
Sequence:	MEVPRLDHAL NSPTSPCEEV IKNLSLEAIQ LCDRDGKNSQ DSGIAEMEEL PVPHNIKISN ITCDSFKISW EMDSKSKDRI THYFIDLNKK ENKNSNKFKH KDVPTKLVAK AVPLPMTVRG HWFLSPRTEY TVAVQTASKQ VGDYVVSEW SEIEFCTAD YSKVHLTQLL EKAIEVIAGRM LKFSVFYRNQ HKEYFDYVRE HHGNAMQPSV KDNSGSHGSP ISGKLEGIFF SCSTEFNTGK PPQDSPYGRY RFEIAAEKLF NPNTNLYFGD FYCMYTAYHY VILVIAPVGS PGDEFCKQRL PQLNSKDNKF LTCTEEDGVL VYHHAQDVIL EVIYTDVVDL SLGTVAEITG HQLMSLSTAN AKKDPSCCKTC NISVGR
Characteristics:	Human PHYHIPL full-length ORF (NP_115815.1, 1 a.a. - 376 a.a.) recombinant protein with GST-tag at N-terminal.
Purification:	in vitro wheat germ expression system

Target Details

Target:	PHYHIPL
Alternative Name:	PHYHIPL (PHYHIPL Products)
Background:	Full Gene Name: phytanoyl-CoA 2-hydroxylase interacting protein-like Synonyms: KIAA1796
Gene ID:	84457
NCBI Accession:	NM_032439

Application Details

Application Notes:	Optimal working dilution should be determined by the investigator.
Comment:	Preparation method: in vitro, wheat germ expression system Product Quality tested by: 12.5% SDS-PAGE Stained with Coomassie Blue.
Restrictions:	For Research Use only

Handling

Buffer:	50 mM Tris-HCl, 10 mM reduced Glutathione, pH =8.0 in the elution buffer.
Handling Advice:	Aliquot to avoid repeated freezing and thawing.
Storage:	-80 °C
Storage Comment:	Best use within three months from the date of receipt of this protein.

Images

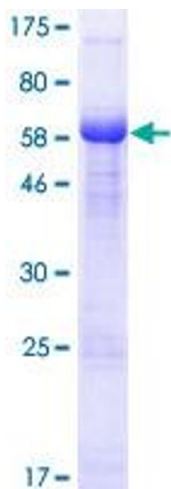


Image 1.