



[Go to Product page](#)

Datasheet for ABIN1314979

PI4KAP2 Protein (AA 1-577) (GST tag)

1 Image

Overview

Quantity:	10 µg
Target:	PI4KAP2
Protein Characteristics:	AA 1-577
Origin:	Human
Source:	Wheat germ
Protein Type:	Recombinant
Purification tag / Conjugate:	This PI4KAP2 protein is labelled with GST tag.
Application:	ELISA, Western Blotting (WB), Affinity Purification (AP), Antibody Array (AA)

Product Details

Purpose:	PI4KAP2 (Human) Recombinant Protein (P02)
Sequence:	MHPQEGHALR RPPPRWLLLT WCLGPWHSVH AGDDRGWHMT VEQKFGFLFSA EIKEADPLAA SEASQPKPCP PEVTPHYIWI DFLVQRFEIA KYCSSDQVEI FSSLLQRSMS LNIGRAKGSM NRHVAAIGPR FKLLTLGLSL LHADVVPNAT IRNVLREKIY STAFDYFSCP PKFPTQGEKR LREDISIMIK FWTAMFSDKK YLTASQLVPP ADIGDLLEQL VEENTGSLSG PAKDFYQREF DFFNKITNVS AIIKPYPKGD ERKKACLSAL SEVTVQPGCS LPSNPEAIVL DVDYKSGTPM QSAAKAPYLA KFKVKRCGVS ELEKEGLRCR SDESEDECSTQ EADGQKISWQ AAIFKLGDDC RQDMLALQII DLFKNIFQLV GLDLFVFPYR VVATAPGCGV IECIPDCTSR DQLGRQTDG MYDYFTRQYG DESTLAFQQA RYNFIRSMMAA YSLLLFLQI KDRHNGNIML DKKGHIIHID FGFMFESSPG GNLGWEPDIK LTDEMVMIMG GKMEATPFKW FMEMCVRGYL AVRHRFSPNM TEREAANFIM KVIQSCFLSN RSRTYNMIQY YQNDIPY
Characteristics:	Human PI4KAP2 full-length ORF (AAH20225.1, 1 a.a. - 577 a.a.) recombinant protein with GST-

Product Details

tag at N-terminal.

Purification: in vitro wheat germ expression system

Target Details

Target: PI4KAP2

Alternative Name: PI4KAP2 ([PI4KAP2 Products](#))

Background: Full Gene Name: phosphatidylinositol 4-kinase, catalytic, alpha pseudogene 2
Synonyms: FLJ44912,MGC31920

Gene ID: 375133

Application Details

Application Notes: Optimal working dilution should be determined by the investigator.

Comment: Preparation method: in vitro, wheat germ expression system
Product Quality tested by: 12.5% SDS-PAGE Stained with Coomassie Blue.

Restrictions: For Research Use only

Handling

Buffer: 50 mM Tris-HCl, 10 mM reduced Glutathione, pH =8.0 in the elution buffer.

Handling Advice: Aliquot to avoid repeated freezing and thawing.

Storage: -80 °C

Storage Comment: Best use within three months from the date of receipt of this protein.

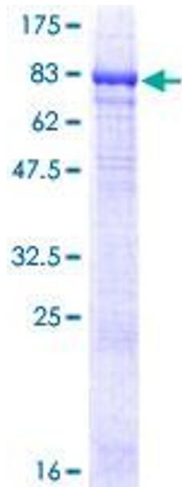


Image 1.