



[Go to Product page](#)

Datasheet for ABIN1315046

## PIGU Protein (AA 101-165) (GST tag)

### 1 Image

#### Overview

Quantity:	10 µg
Target:	PIGU
Protein Characteristics:	AA 101-165
Origin:	Human
Source:	Wheat germ
Protein Type:	Recombinant
Purification tag / Conjugate:	This PIGU protein is labelled with GST tag.
Application:	ELISA, Western Blotting (WB), Affinity Purification (AP), Antibody Array (AA)

#### Product Details

Purpose:	CDC91L1 (Human) Recombinant Protein (Q01)
Sequence:	DFNKVVFCKQ KLLLELDQYA PDVAELIRTP MEMRYIPLKV ALFYLLNPYT ILSCVAKSTC AINNT
Characteristics:	Human CDC91L1 partial ORF ( NP_536724, 101 a.a. - 165 a.a.) recombinant protein with GST-tag at N-terminal.
Purification:	in vitro wheat germ expression system

#### Target Details

Target:	PIGU
Alternative Name:	PIGU ( <a href="#">PIGU Products</a> )
Background:	Full Gene Name: phosphatidylinositol glycan anchor biosynthesis, class U

## Target Details

Synonyms: CDC91L1,GAB1,MGC40420

Gene ID: 128869

NCBI Accession: [NM\\_080476](#)

Pathways: [Inositol Metabolic Process](#)

## Application Details

Application Notes: Optimal working dilution should be determined by the investigator.

Comment: Preparation method: in vitro, wheat germ expression system  
Product Quality tested by: 12.5% SDS-PAGE Stained with Coomassie Blue.

Restrictions: For Research Use only

## Handling

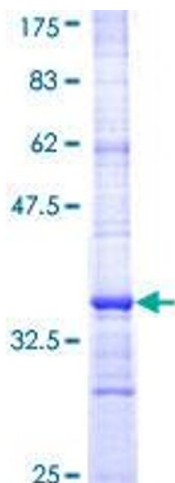
Buffer: 50 mM Tris-HCl, 10 mM reduced Glutathione, pH =8.0 in the elution buffer.

Handling Advice: Aliquot to avoid repeated freezing and thawing.

Storage: -80 °C

Storage Comment: Best use within three months from the date of receipt of this protein.

## Images



**Image 1.**