



[Go to Product page](#)

Datasheet for ABIN1315057

## PIH1D1 Protein (AA 1-290) (GST tag)

### 1 Image

#### Overview

Quantity:	10 µg
Target:	PIH1D1
Protein Characteristics:	AA 1-290
Origin:	Human
Source:	Wheat germ
Protein Type:	Recombinant
Purification tag / Conjugate:	This PIH1D1 protein is labelled with GST tag.
Application:	ELISA, Western Blotting (WB), Affinity Purification (AP), Antibody Array (AA)

#### Product Details

Purpose:	FLJ20643 (Human) Recombinant Protein (P01)
Sequence:	MANPKLLGLE LSEAEAIGAD SARFEELLLQ ASKELQQAQT TRPESTQIQP QPGFCIKTNS SEGKVFINIC HSPSIPPPAD VTEEELLQML EEDQAGFRIP MSLGEPHAEL DAKGQGCTAY DVAVNSDFYR RMQNSDFLRE LVITIAAREGL EDKYNLQLNP EWRMMKNRPF MGSISQQNIR SEQRPRIQEL GDLYTPAPGR AESGPEKPHL NLWLEAPDLL LAEIDLPKLD GALGLSLEIG ENRLVMGGPQ QLYHLDAYIP LQINSHESKA AFHRKRKQLM VAMPLLLVPS
Characteristics:	Human FLJ20643 full-length ORF ( AAH01108, 1 a.a. - 290 a.a.) recombinant protein with GST-tag at N-terminal.
Purification:	in vitro wheat germ expression system

## Target Details

Target:	PIH1D1
Alternative Name:	PIH1D1 ( <a href="#">PIH1D1 Products</a> )
Background:	Full Gene Name: PIH1 domain containing 1 Synonyms: FLJ20643,NOP17
Gene ID:	55011

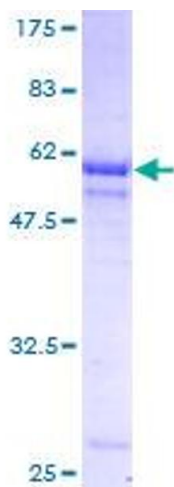
## Application Details

Application Notes:	Optimal working dilution should be determined by the investigator.
Comment:	Preparation method: in vitro, wheat germ expression system Product Quality tested by: 12.5% SDS-PAGE Stained with Coomassie Blue.
Restrictions:	For Research Use only

## Handling

Buffer:	50 mM Tris-HCl, 10 mM reduced Glutathione, pH =8.0 in the elution buffer.
Handling Advice:	Aliquot to avoid repeated freezing and thawing.
Storage:	-80 °C
Storage Comment:	Best use within three months from the date of receipt of this protein.

## Images



**Image 1.**