



Datasheet for ABIN1315156

PIPSL Protein (AA 1-862) (GST tag)



[Go to Product page](#)

1 Image

Overview

Quantity:	10 µg
Target:	PIPSL
Protein Characteristics:	AA 1-862
Origin:	Human
Source:	Wheat germ
Protein Type:	Recombinant
Purification tag / Conjugate:	This PIPSL protein is labelled with GST tag.
Application:	ELISA, Western Blotting (WB), Affinity Purification (AP), Antibody Array (AA)

Product Details

Purpose:	PIPSL (Human) Recombinant Protein (P01)
Sequence:	MASEVPYASG MPIKKIGHRS VDSSGGTTSS ALKGAIQLGI THTVGSLSLK PESDVLMOQDF HMVESIFFPS EGSNLTPAHH YNAFRFKTYA PVAFRYFWEL FGIRPDDYLY SLCSEPLIEL CSSGASGSLF YVSSDDEFIV KTVRHKEAEF LQKLLPGYYI NLNQNPRTLL PKFYGLYCVQ TGGKNIRIVV MNLLPRSVK MHIKYDLKGS TYRRRASQKE REKPLPTFKD LDFLQDIPDG LFLDADVHNA LCKTLQRDCL VLQSFKIMDY SLLMSIHNID HAQREPLSSE TQYSVDTRRP APQKALYSTA MESIQGEARR GGTMETDDHM GGIPARNSKG ERLLLYIGII DILQSYRFVK KLEHSWKALI HDGDTVSVHR PGFYAEWFQR FMCNTVFKKI PLKPSPSKLL RSGSSFSQRA GSSGNSCITY KPLVSGEHA QVTTKAEVEP GVHLGCPDVL PQTPPLEEIS EGSPTPDPSF SPLVEETLQM LTTSVDNSEY MGNDFLPTL LQAQQDAVNT VCHSKTRSNP ENNVGLITLD NDCEVLTTLT PDTGRILSKL HTVQPKGKIT FCMGIHVAHL ALKHRQGNNH KIRIIAFVGN PVEDNEKNLV KLAACKLKEK VNVDIINFGE EEVNTKLTAV FVNTLNGKDG TGSHLVTVPP

Product Details

GPSLADALIS FPILAGEGGA MMGLGASDFE FGVDPADPE LALVLRVFM EQRQRQEEEA
RQAAAASAAE AGIATTGTED SDDALLKMTI SQQEFGHTGL PDLSSMTEEE KIVCAMQMSL
QGAEFGLAES ADIDASSAMD TSEPAKEEDD YDVMQDPEFL QSVLENLPGV DPNNEAIRNA
VGSLASQATK DSKKDKKEED EK

Characteristics: Human PIPSL full-length ORF (AAH68549.1, 1 a.a. - 862 a.a.) recombinant protein with GST-tag at N-terminal.

Purification: in vitro wheat germ expression system

Target Details

Target: PIPSL

Alternative Name: PIPSL ([PIPSL Products](#))

Background: Full Gene Name: PIP5K1A and PSMD4-like
Synonyms: FLJ33990,MGC87444,PIP5K1L1,PSMD4P2,bA429H9.1

Gene ID: 266971

Application Details

Application Notes: Optimal working dilution should be determined by the investigator.

Comment: Preparation method: in vitro, wheat germ expression system
Product Quality tested by: 12.5% SDS-PAGE Stained with Coomassie Blue.

Restrictions: For Research Use only

Handling

Buffer: 50 mM Tris-HCl, 10 mM reduced Glutathione, pH =8.0 in the elution buffer.

Handling Advice: Aliquot to avoid repeated freezing and thawing.

Storage: -80 °C

Storage Comment: Best use within three months from the date of receipt of this protein.

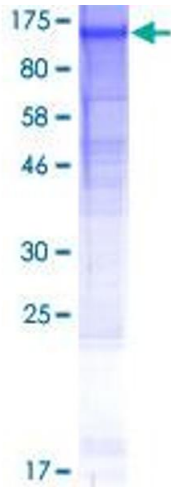


Image 1.