



[Go to Product page](#)

Datasheet for ABIN1315185

PITX2 Protein (AA 60-159) (GST tag)

1 Image

Overview

Quantity:	10 µg
Target:	PITX2
Protein Characteristics:	AA 60-159
Origin:	Human
Source:	Wheat germ
Protein Type:	Recombinant
Purification tag / Conjugate:	This PITX2 protein is labelled with GST tag.
Application:	ELISA, Western Blotting (WB), Affinity Purification (AP), Antibody Array (AA)

Product Details

Purpose:	PITX2 (Human) Recombinant Protein (Q01)
Sequence:	RNRYPD MSTR EEI AVW TNL T EARVRVWFKN RRAKWRKRER NQQAELCKNG FGPQFNGLMQ PYDDMYPGYS YNNWAAKGLT SASLSTKSFP FFNSMNVNPL
Characteristics:	Human PITX2 partial ORF (NP_700476, 60 a.a. - 159 a.a.) recombinant protein with GST-tag at N-terminal.
Purification:	in vitro wheat germ expression system

Target Details

Target:	PITX2
Alternative Name:	PITX2 (PITX2 Products)

Target Details

Background:	Full Gene Name: paired-like homeodomain 2 Synonyms: ARP1,Brx1,IDG2,IGDS,IGDS2,IHG2,IRID2,MGC111022,MGC20144,Otlx2,PTX2,RGS,RIEG,RIEG1,RS
Gene ID:	5308
NCBI Accession:	NM_153427
Pathways:	Retinoic Acid Receptor Signaling Pathway , Regulation of Muscle Cell Differentiation , Skeletal Muscle Fiber Development

Application Details

Application Notes:	Optimal working dilution should be determined by the investigator.
Comment:	Preparation method: in vitro, wheat germ expression system Product Quality tested by: 12.5% SDS-PAGE Stained with Coomassie Blue.
Restrictions:	For Research Use only

Handling

Buffer:	50 mM Tris-HCl, 10 mM reduced Glutathione, pH =8.0 in the elution buffer.
Handling Advice:	Aliquot to avoid repeated freezing and thawing.
Storage:	-80 °C
Storage Comment:	Best use within three months from the date of receipt of this protein.

Images

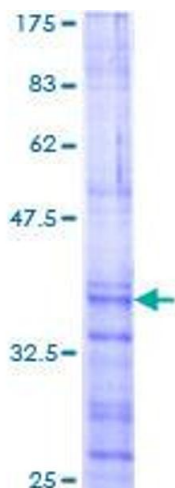


Image 1.