



[Go to Product page](#)

Datasheet for ABIN1315191

## PIWIL1 Protein (AA 431-541) (GST tag)

### 1 Image

#### Overview

Quantity:	10 µg
Target:	PIWIL1
Protein Characteristics:	AA 431-541
Origin:	Human
Source:	Wheat germ
Protein Type:	Recombinant
Purification tag / Conjugate:	This PIWIL1 protein is labelled with GST tag.
Application:	ELISA, Western Blotting (WB), Affinity Purification (AP), Antibody Array (AA)

#### Product Details

Purpose:	PIWIL1 (Human) Recombinant Protein (Q01)
Sequence:	NDNVQRELRD WGLSFDSNLL SFSGRILQTE KIHQGGKTFD YNPQFADWSK ETRGAPLISV KPLDNWLLIY TRRNIEAANS LIQNLFKVTP AMGMQMRKAI MIEVDDRTEA Y
Characteristics:	Human PIWIL1 partial ORF ( NP_004755.2, 431 a.a. - 541 a.a.) recombinant protein with GST-tag at N-terminal.
Purification:	in vitro wheat germ expression system

#### Target Details

Target:	PIWIL1
Alternative Name:	PIWIL1 ( <a href="#">PIWIL1 Products</a> )

## Target Details

Background: Full Gene Name: piwi-like 1 (Drosophila)  
Synonyms: HIWI,MIWI,PIWI

Gene ID: 9271

NCBI Accession: [NM\\_004764](#)

## Application Details

Application Notes: Optimal working dilution should be determined by the investigator.

Comment: Preparation method: in vitro, wheat germ expression system  
Product Quality tested by: 12.5% SDS-PAGE Stained with Coomassie Blue.

Restrictions: For Research Use only

## Handling

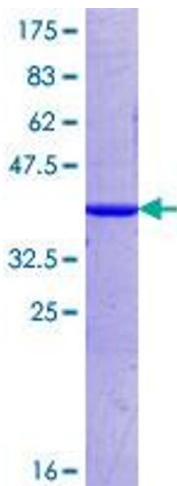
Buffer: 50 mM Tris-HCl, 10 mM reduced Glutathione, pH =8.0 in the elution buffer.

Handling Advice: Aliquot to avoid repeated freezing and thawing.

Storage: -80 °C

Storage Comment: Best use within three months from the date of receipt of this protein.

## Images



**Image 1.**