



[Go to Product page](#)

Datasheet for ABIN1315225

## PKLR Protein (AA 485-574) (GST tag)

### 1 Image

#### Overview

Quantity:	10 µg
Target:	PKLR
Protein Characteristics:	AA 485-574
Origin:	Human
Source:	Wheat germ
Protein Type:	Recombinant
Purification tag / Conjugate:	This PKLR protein is labelled with GST tag.
Application:	Western Blotting (WB), ELISA, Affinity Purification (AP), Antibody Array (AA)

#### Product Details

Purpose:	PKLR (Human) Recombinant Protein (Q01)
Sequence:	SRYPRAAVI AVTRSAQAAR QVHLCRGVFP LLYREPPEAI WADDVDRRVQ FGIESGKLRG FLRVGDLVIV VTGWRPGSGY TNIMRVLSIS
Characteristics:	Human PKLR partial ORF ( AAH25737, 485 a.a. - 574 a.a.) recombinant protein with GST-tag at N-terminal.
Purification:	in vitro wheat germ expression system

#### Target Details

Target:	PKLR
Alternative Name:	PKLR ( <a href="#">PKLR Products</a> )

## Target Details

Background: Full Gene Name: pyruvate kinase, liver and RBC  
Synonyms: PK1,PKL,PKR,PKRL,RPK

Gene ID: 5313

Pathways: [Ribonucleoside Biosynthetic Process](#)

## Application Details

Application Notes: Optimal working dilution should be determined by the investigator.

Comment: Preparation method: in vitro, wheat germ expression system  
Product Quality tested by: 12.5% SDS-PAGE Stained with Coomassie Blue.

Restrictions: For Research Use only

## Handling

Buffer: 50 mM Tris-HCl, 10 mM reduced Glutathione, pH =8.0 in the elution buffer.

Handling Advice: Aliquot to avoid repeated freezing and thawing.

Storage: -80 °C

Storage Comment: Best use within three months from the date of receipt of this protein.

## Images

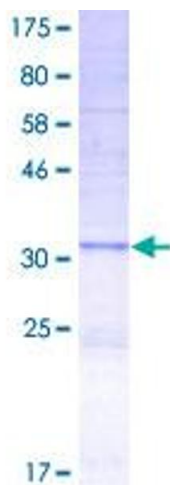


Image 1.