

Datasheet for ABIN1315293

PLA2G4D Protein (AA 1-216) (GST tag)



[Go to Product page](#)

1 Image

Overview

Quantity:	25 µg
Target:	PLA2G4D
Protein Characteristics:	AA 1-216
Origin:	Human
Source:	Wheat germ
Protein Type:	Recombinant
Purification tag / Conjugate:	This PLA2G4D protein is labelled with GST tag.
Application:	Western Blotting (WB), ELISA, Affinity Purification (AP), Antibody Array (AA)

Product Details

Purpose:	PLA2G4D (Human) Recombinant Protein (P01)
Sequence:	MGRLMRRIPR PRICFLEAIW SNIFSLNLLD AWYDLTSSGE SWKQHIKDKT RSLEKEPLTT SGTSSRLEAS WLQPGTALAQ AFKGFLTGRP LHQRSPNFLQ GLQLHQDYCS HKDFSTWADY QLDSMPSQLT PKEPRLCLVD AAYFINTSSP SMFRPGRRLD LILSFDYSLS APFEVPWSPQ GNPSAQPGQA PEASSRATEP LPHTARVPKG RRGVPR
Characteristics:	Human PLA2G4D full-length ORF (AAH34571.1, 1 a.a. - 216 a.a.) recombinant protein with GST-tag at N-terminal.
Purification:	in vitro wheat germ expression system

Target Details

Target:	PLA2G4D
---------	---------

Target Details

Alternative Name:	PLA2G4D (PLA2G4D Products)
Background:	Full Gene Name: phospholipase A2, group IVD (cytosolic) Synonyms: cPLA2delta
Gene ID:	283748
Pathways:	Inositol Metabolic Process , VEGF Signaling

Application Details

Application Notes:	Optimal working dilution should be determined by the investigator.
Comment:	Preparation method: in vitro, wheat germ expression system Product Quality tested by: 12.5% SDS-PAGE Stained with Coomassie Blue.
Restrictions:	For Research Use only

Handling

Buffer:	50 mM Tris-HCl, 10 mM reduced Glutathione, pH =8.0 in the elution buffer.
Handling Advice:	Aliquot to avoid repeated freezing and thawing.
Storage:	-80 °C
Storage Comment:	Best use within three months from the date of receipt of this protein.

Images

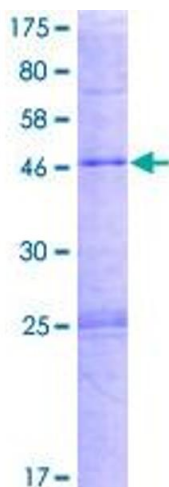


Image 1.