

Datasheet for ABIN1315306
PLAC1 Protein (AA 1-212) (GST tag)



[Go to Product page](#)

1 Image

Overview

Quantity:	10 µg
Target:	PLAC1
Protein Characteristics:	AA 1-212
Origin:	Human
Source:	Wheat germ
Protein Type:	Recombinant
Purification tag / Conjugate:	This PLAC1 protein is labelled with GST tag.
Application:	ELISA, Western Blotting (WB), Affinity Purification (AP), Antibody Array (AA)

Product Details

Purpose:	PLAC1 (Human) Recombinant Protein (P01)
Sequence:	MKVFKFIGLM ILLTSAFSAG SGQSPMTVLC SIDWFMVTVH PFMLNNDVCV HFHELHLGLG CPPNHVQPHA YQFTYRVTEC GIRAKAVSQD MVIYSTEIHY SSKGTPSKFV IPVSCAAPQK SPWLTKPCSM RVASKSRATA QKDEKCYEVF SLSQSSQRPN CDCPPCVFSE EEHTQVPCHQ AGAQAQPLQ PSHFLDISED WSLHTDDMIG SM
Characteristics:	Human PLAC1 full-length ORF (NP_068568.1, 1 a.a. - 212 a.a.) recombinant protein with GST-tag at N-terminal.
Purification:	in vitro wheat germ expression system

Target Details

Target:	PLAC1
---------	-------

Target Details

Alternative Name:	PLAC1 (PLAC1 Products)
Background:	Full Gene Name: placenta-specific 1 Synonyms:
Gene ID:	10761
NCBI Accession:	NM_021796

Application Details

Application Notes:	Optimal working dilution should be determined by the investigator.
Comment:	Preparation method: in vitro, wheat germ expression system Product Quality tested by: 12.5% SDS-PAGE Stained with Coomassie Blue.
Restrictions:	For Research Use only

Handling

Buffer:	50 mM Tris-HCl, 10 mM reduced Glutathione, pH =8.0 in the elution buffer.
Handling Advice:	Aliquot to avoid repeated freezing and thawing.
Storage:	-80 °C
Storage Comment:	Best use within three months from the date of receipt of this protein.

Images

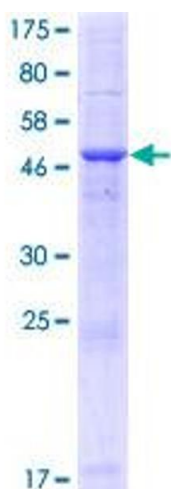


Image 1.