



[Go to Product page](#)

Datasheet for ABIN1315308

PLAC8-Like 1 Protein (PLAC8L1) (AA 1-177) (GST tag)

1 Image

Overview

Quantity:	10 µg
Target:	PLAC8-Like 1 (PLAC8L1)
Protein Characteristics:	AA 1-177
Origin:	Human
Source:	Wheat germ
Protein Type:	Recombinant
Purification tag / Conjugate:	This PLAC8-Like 1 protein is labelled with GST tag.
Application:	ELISA, Western Blotting (WB), Affinity Purification (AP), Antibody Array (AA)

Product Details

Purpose:	PLAC8L1 (Human) Recombinant Protein (P01)
Sequence:	MNWFSGSNFFR CPEDLSLLNI YSPLLSHMSS EDEHFISNLR GHVPASAVVK QPVRGASGRT TITAIQTGG GWSTGLFSVC RDRRICFCGL FCPMCLECDI ARHYGECLCW PLLPGSTFAL RIGTRERHKI QGTLCEDWLA VHCCWAFSIC QVARELKMRT SQVYEICAVP MTKDTLV
Characteristics:	Human PLAC8L1 full-length ORF (NP_001025040.1, 1 a.a. - 177 a.a.) recombinant protein with GST-tag at N-terminal.
Purification:	in vitro wheat germ expression system

Target Details

Target:	PLAC8-Like 1 (PLAC8L1)
Alternative Name:	PLAC8L1 (PLAC8L1 Products)

Target Details

Background:	Full Gene Name: PLAC8-like 1 Synonyms:
Gene ID:	153770
NCBI Accession:	NM_001029869

Application Details

Application Notes:	Optimal working dilution should be determined by the investigator.
Comment:	Preparation method: in vitro, wheat germ expression system Product Quality tested by: 12.5% SDS-PAGE Stained with Coomassie Blue.
Restrictions:	For Research Use only

Handling

Buffer:	50 mM Tris-HCl, 10 mM reduced Glutathione, pH =8.0 in the elution buffer.
Handling Advice:	Aliquot to avoid repeated freezing and thawing.
Storage:	-80 °C
Storage Comment:	Best use within three months from the date of receipt of this protein.

Images

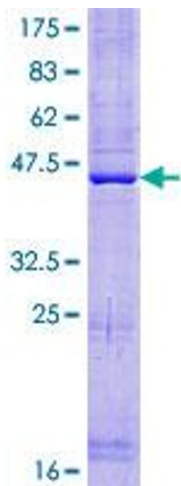


Image 1.