



[Go to Product page](#)

Datasheet for ABIN1315320

Phospholipase B Protein (PLB) (AA 1-423) (GST tag)

1 Image

Overview

Quantity:	10 µg
Target:	Phospholipase B (PLB)
Protein Characteristics:	AA 1-423
Origin:	Human
Source:	Wheat germ
Protein Type:	Recombinant
Purification tag / Conjugate:	This Phospholipase B protein is labelled with GST tag.
Application:	Western Blotting (WB), ELISA, Affinity Purification (AP), Antibody Array (AA)

Product Details

Purpose:	PLB1 (Human) Recombinant Protein (P01)
Sequence:	MPITCPTQNE PFLRTPRNSN YTYPIKPAIE NWGSDFLCTE WKASNSVPTS VHQLRPADIK VVAALGDSL TAVGARPNN SLDLPTSWRGL SWSIGGDGNL ETHHTLPNLL KKFNPYLLGF STSTWEGTAG LNVAEGARA RDMPAQAWDL LERMKNSPDI NLEKDWKLV LFIGVNDLCH YCENPEAHLA TEYVQHIQQA LDILSEELPR AFVNVVEVME LASLYQGQGG KCAMLAAQNN CTCLRHSQSS LEKQELKKVN WNLQHGISSF SYWHQYTQRE DFAVVVQPF QNTLTPLNER GDTDLTFFSE DCFHFSDRGH AEMAIALWNN MLEPVGRKTT SNNFTHSRAK LKCPSPESPY LYTLRNSRLL PDQAEAEPEV LYWAVPVAAG VGLVVGIIGT VWRRCRRGGR REDPPMSLRT VAL
Characteristics:	Human PLB1 full-length ORF (AAH42674.1, 1 a.a. - 423 a.a.) recombinant protein with GST-tag at N-terminal.
Purification:	in vitro wheat germ expression system

Target Details

Target:	Phospholipase B (PLB)
Alternative Name:	PLB1 (PLB Products)
Background:	Full Gene Name: phospholipase B1 Synonyms: PLB
Gene ID:	151056

Application Details

Application Notes:	Optimal working dilution should be determined by the investigator.
Comment:	Preparation method: in vitro, wheat germ expression system Product Quality tested by: 12.5% SDS-PAGE Stained with Coomassie Blue.
Restrictions:	For Research Use only

Handling

Buffer:	50 mM Tris-HCl, 10 mM reduced Glutathione, pH =8.0 in the elution buffer.
Handling Advice:	Aliquot to avoid repeated freezing and thawing.
Storage:	-80 °C
Storage Comment:	Best use within three months from the date of receipt of this protein.

Images

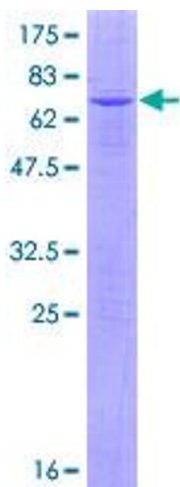


Image 1.