

Datasheet for ABIN1315340  
**PLCL2 Protein (AA 121-210) (GST tag)**



[Go to Product page](#)

1 Image

## Overview

Quantity:	10 µg
Target:	PLCL2
Protein Characteristics:	AA 121-210
Origin:	Human
Source:	Wheat germ
Protein Type:	Recombinant
Purification tag / Conjugate:	This PLCL2 protein is labelled with GST tag.
Application:	Western Blotting (WB), ELISA, Affinity Purification (AP), Antibody Array (AA)

## Product Details

Purpose:	PLCL2 (Human) Recombinant Protein (Q01)
Sequence:	RYLISYGKHT LDMLESSQDN MRTSWVSQMF SEIDVDNLGH ITLCNAVQCI RNLNPGKTS KIELKFKELH KSKDKAGTEV TKEEFIEVFH
Characteristics:	Human PLCL2 partial ORF ( AAH36392, 121 a.a. - 210 a.a.) recombinant protein with GST-tag at N-terminal.
Purification:	in vitro wheat germ expression system

## Target Details

Target:	PLCL2
Alternative Name:	PLCL2 ( <a href="#">PLCL2 Products</a> )

## Target Details

---

Background: Full Gene Name: phospholipase C-like 2  
Synonyms: FLJ13484,KIAA1092,PLCE2

---

Gene ID: 23228

---

## Application Details

---

Application Notes: Optimal working dilution should be determined by the investigator.

---

Comment: Preparation method: in vitro, wheat germ expression system  
Product Quality tested by: 12.5% SDS-PAGE Stained with Coomassie Blue.

---

Restrictions: For Research Use only

---

## Handling

---

Buffer: 50 mM Tris-HCl, 10 mM reduced Glutathione, pH =8.0 in the elution buffer.

---

Handling Advice: Aliquot to avoid repeated freezing and thawing.

---

Storage: -80 °C

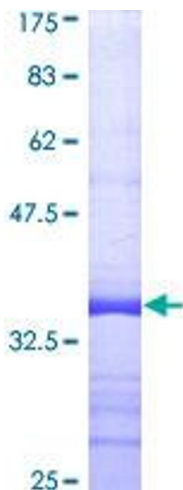
---

Storage Comment: Best use within three months from the date of receipt of this protein.

---

## Images

---



**Image 1.**