



[Go to Product page](#)

Datasheet for ABIN1315344

## PLCXD3 Protein (AA 1-321) (GST tag)

### 1 Image

#### Overview

Quantity:	10 µg
Target:	PLCXD3
Protein Characteristics:	AA 1-321
Origin:	Human
Source:	Wheat germ
Protein Type:	Recombinant
Purification tag / Conjugate:	This PLCXD3 protein is labelled with GST tag.
Application:	ELISA, Western Blotting (WB), Affinity Purification (AP), Antibody Array (AA)

#### Product Details

Purpose:	PLCXD3 (Human) Recombinant Protein (P01)
Sequence:	MASSQGKNEL KLADWMATLP ESMHSIPLTN LAIPGSHDSF SFYIDEASPV GPEQPETVQN FVSVFGTVAK KLMRKWLATQ TMNFTGQLGA GIRYFDLRIS TKPRDPDNEL YFAHGLFSAK VNEGLEEINA FLTDHHKEVV FLDFNHFYGM QKYHHEKLVQ MLKDIYGNKM CPAIFAQEVS LKYLWEKDYQ VLVFYHSPVA LEVPFLWPGQ MMPAPWANTT DPEKLIQFLQ ASITERRKKK SFFISQVVLTKASTVVKGV ASGLRETITE RALPAMMQWV RTQKPGESGI NIVTADFVEL GDFISTVIKL NYVFDEGEAN T
Characteristics:	Human PLCXD3 full-length ORF ( NP_001005473.1, 1 a.a. - 321 a.a.) recombinant protein with GST-tag at N-terminal.
Purification:	in vitro wheat germ expression system

## Target Details

Target:	PLCXD3
Alternative Name:	PLCXD3 ( <a href="#">PLCXD3 Products</a> )
Background:	Full Gene Name: phosphatidylinositol-specific phospholipase C, X domain containing 3 Synonyms:
Gene ID:	345557
NCBI Accession:	<a href="#">NM_001005473</a>

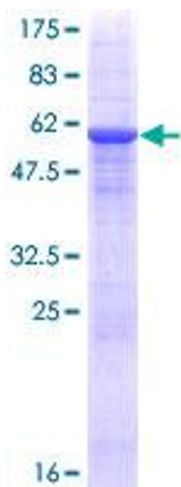
## Application Details

Application Notes:	Optimal working dilution should be determined by the investigator.
Comment:	Preparation method: in vitro, wheat germ expression system Product Quality tested by: 12.5% SDS-PAGE Stained with Coomassie Blue.
Restrictions:	For Research Use only

## Handling

Buffer:	50 mM Tris-HCl, 10 mM reduced Glutathione, pH =8.0 in the elution buffer.
Handling Advice:	Aliquot to avoid repeated freezing and thawing.
Storage:	-80 °C
Storage Comment:	Best use within three months from the date of receipt of this protein.

## Images



**Image 1.**