



[Go to Product page](#)

Datasheet for ABIN1315356
PLD5 Protein (AA 1-445) (GST tag)

1 Image

Overview

Quantity:	10 µg
Target:	PLD5
Protein Characteristics:	AA 1-445
Origin:	Human
Source:	Wheat germ
Protein Type:	Recombinant
Purification tag / Conjugate:	This PLD5 protein is labelled with GST tag.
Application:	ELISA, Western Blotting (WB), Affinity Purification (AP), Antibody Array (AA)

Product Details

Purpose:	PLD5 (Human) Recombinant Protein (P01)
Sequence:	MGEDDGLSE KNCQNKCRIA LVENIPEGLN YSENAPFHLS LFQGWMLLN MAKKSVDIVS SHWDLNHTHP SACQGQRLFE KLLQLTSQNI EIKLVSDVTA DSKVLEALKL KGAEVTYMMN TAYNKGRLQS SFWIVDKQHV YIGSAGLDWQ SLGQMKELGV IFYNCSSLVL DLQRIFALYS SLKFKSRVPQ TWSKRLYGVY DNEKKLQLQL NETKSQAFVS NSPKLFCPKN RSFDIDAIYS VIDDAKQYVY IAVMDYLPIS STSTKRTYWP DLDKIREAL VLRSVRVRL LSFWKETDPL TFNFISLKA ICTEIANCSL KVKFFDLERE NACATKEQKN HTFPRLNRNK YMVTDGAAYI GNFDWVGNDF TQNAGTGLVI NQADVRNNRS IIKQLKDVFE RDWYSPYAKT LQPTKQPNC SLFKLKPLSN KTATDDTGGK DPRNV
Characteristics:	Human PLD5 full-length ORF (AAI01374.1, 1 a.a. - 445 a.a.) recombinant protein with GST-tag at N-terminal.

Product Details

Purification: in vitro wheat germ expression system

Target Details

Target: PLD5

Alternative Name: PLD5 ([PLD5 Products](#))

Background: Full Gene Name: phospholipase D family, member 5
Synonyms: FLJ40773,MGC120565,MGC120566,MGC120567

Gene ID: 200150

Application Details

Application Notes: Optimal working dilution should be determined by the investigator.

Comment: Preparation method: in vitro, wheat germ expression system
Product Quality tested by: 12.5% SDS-PAGE Stained with Coomassie Blue.

Restrictions: For Research Use only

Handling

Buffer: 50 mM Tris-HCl, 10 mM reduced Glutathione, pH =8.0 in the elution buffer.

Handling Advice: Aliquot to avoid repeated freezing and thawing.

Storage: -80 °C

Storage Comment: Best use within three months from the date of receipt of this protein.

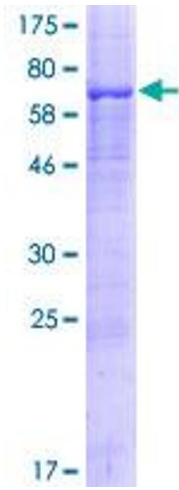


Image 1.