



[Go to Product page](#)

Datasheet for ABIN1315360

## Pallidin Protein (AA 1-99) (GST tag)

### 1 Image

#### Overview

Quantity:	10 µg
Target:	Pallidin (PLDN)
Protein Characteristics:	AA 1-99
Origin:	Human
Source:	Wheat germ
Protein Type:	Recombinant
Purification tag / Conjugate:	This Pallidin protein is labelled with GST tag.
Application:	ELISA, Western Blotting (WB), Affinity Purification (AP), Antibody Array (AA)

#### Product Details

Purpose:	PLDN (Human) Recombinant Protein (Q01)
Sequence:	MSVPGPSSPD GALTRPPYCL EAGEPTPGLS DTSPDEGLIE DLTIEDKAVE QLAEGLLSHY LPDLQRSKQA LQELTQNQVV LLDTLEQEIS KFKECHSML
Characteristics:	Human PLDN partial ORF ( NP_036520.1, 1 a.a. - 99 a.a.) recombinant protein with GST-tag at N-terminal.
Purification:	in vitro wheat germ expression system

#### Target Details

Target:	Pallidin (PLDN)
Alternative Name:	PLDN ( <a href="#">PLDN Products</a> )

## Target Details

---

Background: Full Gene Name: pallidin homolog (mouse)  
Synonyms: PA,PALLID

---

Gene ID: 26258

---

NCBI Accession: [NM\\_012388](#)

---

Pathways: [Synaptic Vesicle Exocytosis](#)

---

## Application Details

---

Application Notes: Optimal working dilution should be determined by the investigator.

---

Comment: Preparation method: in vitro, wheat germ expression system  
Product Quality tested by: 12.5% SDS-PAGE Stained with Coomassie Blue.

---

Restrictions: For Research Use only

---

## Handling

---

Buffer: 50 mM Tris-HCl, 10 mM reduced Glutathione, pH =8.0 in the elution buffer.

---

Handling Advice: Aliquot to avoid repeated freezing and thawing.

---

Storage: -80 °C

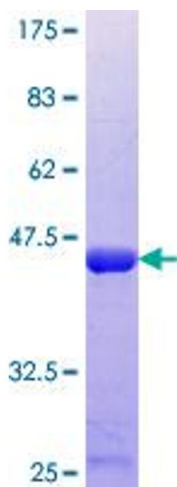
---

Storage Comment: Best use within three months from the date of receipt of this protein.

---

## Images

---



**Image 1.**