

Datasheet for ABIN1315362

PLEC Protein (AA 4384-4493) (GST tag)



[Go to Product page](#)

1 Image

Overview

Quantity:	10 µg
Target:	PLEC
Protein Characteristics:	AA 4384-4493
Origin:	Human
Source:	Wheat germ
Protein Type:	Recombinant
Purification tag / Conjugate:	This PLEC protein is labelled with GST tag.
Application:	Western Blotting (WB), ELISA, Affinity Purification (AP), Antibody Array (AA)

Product Details

Purpose:	PLEC1 (Human) Recombinant Protein (Q01)
Sequence:	CGFEDPRTKT KMSAAQALKK GWLYYEAGQR FLEVQYLTGG LIEPDTPGRV PLDEALQRGT VDARTAQKLR DVGAYSXYLT CPKTKLKISY KDALDRSMVE EGTGLRLLEA
Characteristics:	Human PLEC1 partial ORF (NP_000436, 4384 a.a. - 4493 a.a.) recombinant protein with GST-tag at N-terminal.
Purification:	in vitro wheat germ expression system

Target Details

Target:	PLEC
Alternative Name:	PLEC1 (PLEC Products)

Target Details

Background:	Full Gene Name: plectin 1, intermediate filament binding protein 500 kDa Synonyms: EBS1,EBS0,HD1,PCN,PLEC1b,PLTN
Gene ID:	5339
NCBI Accession:	NM_000445

Application Details

Application Notes:	Optimal working dilution should be determined by the investigator.
Comment:	Preparation method: in vitro, wheat germ expression system Product Quality tested by: 12.5% SDS-PAGE Stained with Coomassie Blue.
Restrictions:	For Research Use only

Handling

Buffer:	50 mM Tris-HCl, 10 mM reduced Glutathione, pH =8.0 in the elution buffer.
Handling Advice:	Aliquot to avoid repeated freezing and thawing.
Storage:	-80 °C
Storage Comment:	Best use within three months from the date of receipt of this protein.

Images

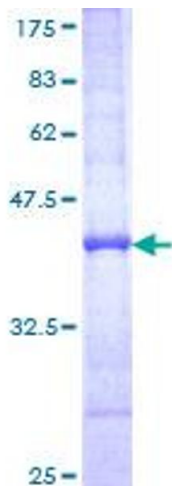


Image 1.