

Datasheet for ABIN1315368

Pleckstrin 2 Protein (PLEK2) (GST tag)[Go to Product page](#)**1** Image

Overview

Quantity:	10 µg
Target:	Pleckstrin 2 (PLEK2)
Origin:	Human
Source:	Wheat germ
Protein Type:	Recombinant
Purification tag / Conjugate:	This Pleckstrin 2 protein is labelled with GST tag.
Application:	ELISA, Western Blotting (WB), Affinity Purification (AP), Antibody Array (AA)

Product Details

Purpose:	PLEK2 (Human) Recombinant Protein (P01)
Sequence:	MEDGVLKEGF LVKRGHIVHN WKARWFILRQ NTLVYYKLEG GRRVTPPKGR ILLDGCTITC PCLEYENRPL LIKLTQTST EYFLEACSRE ERDAWAFEIT GAIHAGQPGK VQQLHSLRNS FKLPPHISLH RIVDKMHDSN TGIRSSPNME QGSTYKKTFL GSSLVDWLIS NSFTASRLEA VTLASMLMEE NFLRPVGVRS MGAIRSGDLA EQFLDDSTAL YTFAESYKKK ISPKEEISLS TVELSGTVVK QGYLAKQGHK RKNWKVRRFV LRKDPAFLHY YDPSKEENRP VGGFSLRGSL VSALEDNGVP TGVKGNVQGN LFKVITKDDT HYYIQASSKA ERAEWIEAIK KLT
Characteristics:	Human PLEK2 full-length ORF (NP_057529.1, 1 a.a. - 353 a.a.) recombinant protein with GST-tag at N-terminal.
Purification:	in vitro wheat germ expression system

Target Details

Target:	Pleckstrin 2 (PLEK2)
Alternative Name:	PLEK2 (PLEK2 Products)
Background:	Gene: pleckstrin 2
Gene ID:	26499
NCBI Accession:	NM_016445

Application Details

Application Notes:	Optimal working dilution should be determined by the investigator.
Restrictions:	For Research Use only

Handling

Buffer:	50 mM Tris-HCl, 10 mM reduced Glutathione, pH =8.0 in the elution buffer.
Handling Advice:	Aliquot to avoid repeated freezing and thawing.
Storage:	-80 °C
Storage Comment:	Best use within three months from the date of receipt of this protein.

Images

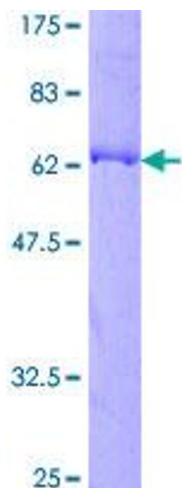


Image 1.