



[Go to Product page](#)

Datasheet for ABIN1315381

## PLEKHA4 Protein (AA 1-583) (GST tag)

### 1 Image

#### Overview

Quantity:	10 µg
Target:	PLEKHA4
Protein Characteristics:	AA 1-583
Origin:	Human
Source:	Wheat germ
Protein Type:	Recombinant
Purification tag / Conjugate:	This PLEKHA4 protein is labelled with GST tag.
Application:	ELISA, Western Blotting (WB), Affinity Purification (AP), Antibody Array (AA)

#### Product Details

Purpose:	PLEKHA4 (Human) Recombinant Protein (P01)
Sequence:	MEGSRPRSSL SLASSASTIS SLSSLSPKKP TRAVNKVHAF GKRGNALRRD PNLPVHIRGW LHKQDSSGLR LWKRRWFVLS GHCLFYKDS REESVLGSLV LPSYNIRPDG PGAPRGRFT FTAEHPGMRT YVLAADTLED LRGWLRALGR ASRAEGDDYG QPRSPARPQP GEGPGGPGGP PEVSRGEEGR ISESPEVTRL SRGRGRPRLL TPSPTDLHS GLQMRRARSP DLFTPLSRPP SPLSLPRPRS APARRPPAPS GDTAPPARPH TPLSRIDVRP PLDWGPQRQT LSRPPTPRRG PPSEAGGGKP PRSPQHWSQE PRTQPGPPLE STFHQSLTD TLLTKLGGQD RLLRRLQEEI DQKQEEKEQL EAALELTRQQ LGQATREAGA PGRWGRQRL LQDRLVSVRA TLCHLTQERE RVWDTYSGLE QELGTLRETL EYLLHLGSPQ DRVSAQQQLW MVEDTLAGLG GPQKPPPHTE PDSPSPVLQG EESSERESLP ESLELSSPRS PETDWGRPPG GDKDLASPHL GLGSPRVSRA SSPEGRHLPS PQLGTKSKEH HPLLADFRRS PGAGSQPLPS PGY
Characteristics:	Human PLEKHA4 full-length ORF ( AAH64601.1, 1 a.a. - 583 a.a.) recombinant protein with GST-

## Product Details

---

tag at N-terminal.

Purification: in vitro wheat germ expression system

## Target Details

---

Target: PLEKHA4

Alternative Name: PLEKHA4 ([PLEKHA4 Products](#))

Background: Gene: pleckstrin homology domain containing, family A (phosphoinositide binding specific)  
member 4

Synonyms: PEPP1

Gene ID: 57664

## Application Details

---

Application Notes: Optimal working dilution should be determined by the investigator.

Restrictions: For Research Use only

## Handling

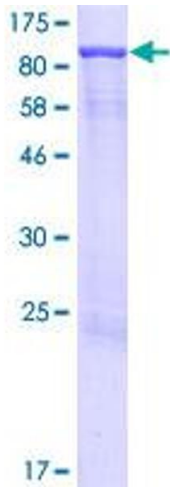
---

Buffer: 50 mM Tris-HCl, 10 mM reduced Glutathione, pH =8.0 in the elution buffer.

Handling Advice: Aliquot to avoid repeated freezing and thawing.

Storage: -80 °C

Storage Comment: Best use within three months from the date of receipt of this protein.



**Image 1.**