

Datasheet for ABIN1315383  
**PLEKHA4 Protein (AA 600-699) (GST tag)**



[Go to Product page](#)

1 Image

Overview

Quantity:	10 µg
Target:	PLEKHA4
Protein Characteristics:	AA 600-699
Origin:	Human
Source:	Wheat germ
Protein Type:	Recombinant
Purification tag / Conjugate:	This PLEKHA4 protein is labelled with GST tag.
Application:	ELISA, Western Blotting (WB), Affinity Purification (AP), Antibody Array (AA)

Product Details

Purpose:	PLEKHA4 (Human) Recombinant Protein (Q01)
Sequence:	RNQEGRPFPP RPTSPRLTL GRTLSPARRQ PDVEQRPVVG HSGAQKWLRS SGSWSSPRNT TPYLPTSEGH RERVL SLSQA LATEASQWHR MMTGGNLD SQ
Characteristics:	Human PLEKHA4 partial ORF ( NP_065955, 600 a.a. - 699 a.a.) recombinant protein with GST-tag at N-terminal.
Purification:	in vitro wheat germ expression system

Target Details

Target:	PLEKHA4
Alternative Name:	PLEKHA4 ( <a href="#">PLEKHA4 Products</a> )

## Target Details

Background:	Full Gene Name: pleckstrin homology domain containing, family A (phosphoinositide binding specific) member 4 Synonyms: PEPP1
Gene ID:	57664
NCBI Accession:	<a href="#">NM_020904</a>

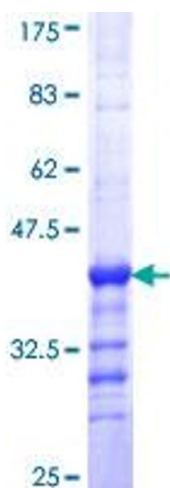
## Application Details

Application Notes:	Optimal working dilution should be determined by the investigator.
Comment:	Preparation method: in vitro, wheat germ expression system Product Quality tested by: 12.5% SDS-PAGE Stained with Coomassie Blue.
Restrictions:	For Research Use only

## Handling

Buffer:	50 mM Tris-HCl, 10 mM reduced Glutathione, pH =8.0 in the elution buffer.
Handling Advice:	Aliquot to avoid repeated freezing and thawing.
Storage:	-80 °C
Storage Comment:	Best use within three months from the date of receipt of this protein.

## Images



**Image 1.**