

Datasheet for ABIN1315410
PLEKHM1P Protein (AA 1-237) (GST tag)



[Go to Product page](#)

1 Image

Overview

Quantity:	10 µg
Target:	PLEKHM1P
Protein Characteristics:	AA 1-237
Origin:	Human
Source:	Wheat germ
Protein Type:	Recombinant
Purification tag / Conjugate:	This PLEKHM1P protein is labelled with GST tag.
Application:	ELISA, Western Blotting (WB), Affinity Purification (AP), Antibody Array (AA)

Product Details

Purpose:	LOC440456 (Human) Recombinant Protein (P01)
Sequence:	MTSPRTGTPA LDNQPQTGIP RAAGGRDAGT PGQQIPGGEG KEGGGTGEAH PPWAPLATSQ RPFRRSLPGS GPRLSAPVLV PMPPKVPSRG IQVPPRPAQT QLLWVWVTAL LSVAVPIRCR CQLRFRETSP APPRKPRPGR WSGPNLPAPP TRPLGSLRPA QQTRGTLDKV AKEPYGSPGL DPAPSVPQPR QAAVSWPLAW VTLGGRRRCG QCGSLEGPCT SGEDHRLMAL VEGRRQI
Characteristics:	Human LOC440456 full-length ORF (ENSP00000313104, 1 a.a. - 237 a.a.) recombinant protein with GST-tag at N-terminal.
Purification:	in vitro wheat germ expression system

Target Details

Target:	PLEKHM1P
---------	----------

Target Details

Alternative Name:	PLEKHM1P (PLEKHM1P Products)
Background:	Full Gene Name: pleckstrin homology domain containing, family M (with RUN domain) member 1 pseudogene Synonyms:
Gene ID:	440456

Application Details

Application Notes:	Optimal working dilution should be determined by the investigator.
Comment:	Preparation method: in vitro, wheat germ expression system Product Quality tested by: 12.5% SDS-PAGE Stained with Coomassie Blue.
Restrictions:	For Research Use only

Handling

Buffer:	50 mM Tris-HCl, 10 mM reduced Glutathione, pH =8.0 in the elution buffer.
Handling Advice:	Aliquot to avoid repeated freezing and thawing.
Storage:	-80 °C
Storage Comment:	Best use within three months from the date of receipt of this protein.

Images

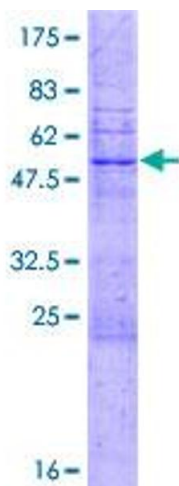


Image 1.