

Datasheet for ABIN1315459
PLRG1 Protein (AA 1-514) (GST tag)



[Go to Product page](#)

1 Image

Overview

Quantity:	10 µg
Target:	PLRG1
Protein Characteristics:	AA 1-514
Origin:	Human
Source:	Wheat germ
Protein Type:	Recombinant
Purification tag / Conjugate:	This PLRG1 protein is labelled with GST tag.
Application:	ELISA, Western Blotting (WB), Affinity Purification (AP), Antibody Array (AA)

Product Details

Purpose:	PLRG1 (Human) Recombinant Protein (P01)
Sequence:	MVEEVQKHSV HTLVFRSLKR THDMFVADNG KPVPLDEESH KRKMAIKLRN EYGPVLHMPT SKENLKEKGP QNATDSYVHK QYPANQGQEV EYFVAGTHPY PPGPGVALTA DTKIQRMPSE SAAQSLAVAL PLQTKADANR TAPSGSEYRH PGASDRPQPT AMNSIVMETG NTKNSALMAK KAPTMPKPQW HPPWKLYRVI SGHLGWVRCI AVEPGNQWFV TGSADRTIKI WDLASGKCLK SLTGHIHSTVR GVIVSTRSPY LFSCGEDKQV KCWDLEYNKV IRHYHGHLA VYGLDLHPTI DVLVTCRSDS TARIWDVVRTK ASVHTLSGHT NAVATVRCQA AEPQITGSH DTTIRLWDLV AGKTRVTLTN HKKSVRAVWL HPRHYTFASG SPDNIKQWKF PDGSFIQNLG GHNAIINTLT VNSDGVLVSG ADNGTMHLWD WRTGYNFQRV HAAVQPGSLD SESGIFACAF DQSESRLTLA EADKTIKVYR EDDTATEETH PVSWKPEIHK RKRF
Characteristics:	Human PLRG1 full-length ORF (NP_002660.1, 1 a.a. - 514 a.a.) recombinant protein with GST-tag at N-terminal.

Product Details

Purification: in vitro wheat germ expression system

Target Details

Target: PLRG1

Alternative Name: PLRG1 ([PLRG1 Products](#))

Background: Full Gene Name: pleiotropic regulator 1 (PRL1 homolog, Arabidopsis)
Synonyms: MGC110980,PRL1

Gene ID: 5356

NCBI Accession: [NM_002669](#)

Application Details

Application Notes: Optimal working dilution should be determined by the investigator.

Comment: Preparation method: in vitro, wheat germ expression system
Product Quality tested by: 12.5% SDS-PAGE Stained with Coomassie Blue.

Restrictions: For Research Use only

Handling

Buffer: 50 mM Tris-HCl, 10 mM reduced Glutathione, pH =8.0 in the elution buffer.

Handling Advice: Aliquot to avoid repeated freezing and thawing.

Storage: -80 °C

Storage Comment: Best use within three months from the date of receipt of this protein.

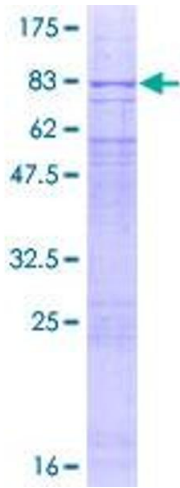


Image 1.