

Datasheet for ABIN1315477

**PLSCR4 Protein (AA 1-329) (GST tag)**[Go to Product page](#)**1** Image

## Overview

Quantity:	10 µg
Target:	PLSCR4
Protein Characteristics:	AA 1-329
Origin:	Human
Source:	Wheat germ
Protein Type:	Recombinant
Purification tag / Conjugate:	This PLSCR4 protein is labelled with GST tag.
Application:	Western Blotting (WB), ELISA, Affinity Purification (AP), Antibody Array (AA)

## Product Details

Purpose:	PLSCR4 (Human) Recombinant Protein (P01)
Sequence:	MSGVVPTAPE QPAGEMENQT KPPDPRPDAP PEYSSHFLPG PPGTAVPPPT GYPGGLPMGY YSPQQPSTFP LYQPVGGIHP VRYQPGKYPM PNQSVPIWWM PGPTPMANCP PGLEYLVQLD NIHVLQHFEP LEMMTCFETN NRYDIKNSD QMVVYVTEDT DDFTRNAYRT LRPFVLRVTD CMGREIMTMQ RPFRCCTCCC CCPSARQELE VQCPPGVTIG FVAEHWNLCR AVYSIQNEKK ENVMRVRGPC STYGCGSDSV FEVKSLDGIS NIGSIIRKWN GLLSAMADAD HFDIHFPLDL DVKMKAMIFG ACFLIDFMYF ERSPPQRSR
Characteristics:	Human PLSCR4 full-length ORF ( NP_065086.1, 1 a.a. - 329 a.a.) recombinant protein with GST-tag at N-terminal.
Purification:	in vitro wheat germ expression system

## Target Details

Target:	PLSCR4
Alternative Name:	PLSCR4 ( <a href="#">PLSCR4 Products</a> )
Background:	Full Gene Name: phospholipid scramblase 4 Synonyms: TRA1
Gene ID:	57088
NCBI Accession:	<a href="#">NM_020353</a>
Pathways:	<a href="#">Cellular Response to Molecule of Bacterial Origin</a>

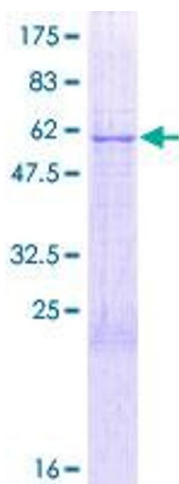
## Application Details

Application Notes:	Optimal working dilution should be determined by the investigator.
Comment:	Preparation method: in vitro, wheat germ expression system Product Quality tested by: 12.5% SDS-PAGE Stained with Coomassie Blue.
Restrictions:	For Research Use only

## Handling

Buffer:	50 mM Tris-HCl, 10 mM reduced Glutathione, pH =8.0 in the elution buffer.
Handling Advice:	Aliquot to avoid repeated freezing and thawing.
Storage:	-80 °C
Storage Comment:	Best use within three months from the date of receipt of this protein.

## Images



**Image 1.**