



Datasheet for ABIN1315479

PLSCR4 Protein (AA 56-155) (GST tag)



[Go to Product page](#)

1 Image

Overview

Quantity:	10 µg
Target:	PLSCR4
Protein Characteristics:	AA 56-155
Origin:	Human
Source:	Wheat germ
Protein Type:	Recombinant
Purification tag / Conjugate:	This PLSCR4 protein is labelled with GST tag.
Application:	Western Blotting (WB), ELISA, Affinity Purification (AP), Antibody Array (AA)

Product Details

Purpose:	PLSCR4 (Human) Recombinant Protein (Q01)
Sequence:	LPMGYYSPPQ PSTFPLYQPV GGIHPVRYQP GKYPMPNQS SV PITWMPGPTP MANCPPGLEY LVQLDNIHVL QHFEPLEMMT CFETNNRYDI KNNSDQM VYV
Characteristics:	Human PLSCR4 partial ORF (NP_065086.1, 56 a.a. - 155 a.a.) recombinant protein with GST-tag at N-terminal.
Purification:	in vitro wheat germ expression system

Target Details

Target:	PLSCR4
Alternative Name:	PLSCR4 (PLSCR4 Products)

Target Details

Background:	Full Gene Name: phospholipid scramblase 4 Synonyms: TRA1
Gene ID:	57088
NCBI Accession:	NM_020353
Pathways:	Cellular Response to Molecule of Bacterial Origin

Application Details

Application Notes:	Optimal working dilution should be determined by the investigator.
Comment:	Preparation method: in vitro, wheat germ expression system Product Quality tested by: 12.5% SDS-PAGE Stained with Coomassie Blue.
Restrictions:	For Research Use only

Handling

Buffer:	50 mM Tris-HCl, 10 mM reduced Glutathione, pH =8.0 in the elution buffer.
Handling Advice:	Aliquot to avoid repeated freezing and thawing.
Storage:	-80 °C
Storage Comment:	Best use within three months from the date of receipt of this protein.

Images

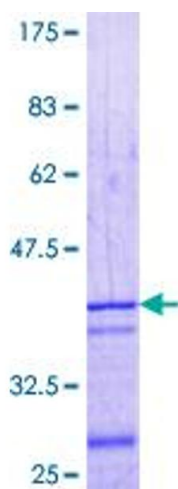


Image 1.