

Datasheet for ABIN1315505
PM20D1 Protein (AA 1-502) (GST tag)



[Go to Product page](#)

1 Image

Overview

Quantity:	10 µg
Target:	PM20D1
Protein Characteristics:	AA 1-502
Origin:	Human
Source:	Wheat germ
Protein Type:	Recombinant
Purification tag / Conjugate:	This PM20D1 protein is labelled with GST tag.
Application:	ELISA, Western Blotting (WB), Affinity Purification (AP), Antibody Array (AA)

Product Details

Purpose:	PM20D1 (Human) Recombinant Protein (P01)
Sequence:	<p>MAQRVCVLA LVAMLLLVFP TVSRSMGPRS GEYQRASRIP SQFSKEERVA MKEALKGAIQ IPTVTFSSSEK SNTTALAEFG KYIRKVFPTV VSTSFIQHEV VEEYSHLFTI QGSDPSLQPY LLMAHFDVVP APEEGWEVPP FSGLERDGVY YGRGTLDDKN SVMALLQALE LLLIRKYIPR RSFFISLGHG EESSGTGAQR ISALLQSRGV QLAFIVDEGG FILDDFIPNF KKPIALTAVS EKGSMNMLQ VNMTSGHSSA PPKETSIGIL AA AVSRLEQT PMPIIFGSGT VVTVLQQLAN EFPFPVNIIL SNPWLFEPLI SRFMERNPLT NAIIRTTTAL TIFKARVKFN VIPPVAQATV NFRIHPGQTV QEVLELTKNT VADNRVQFHV LSAFDPLPVS PSDDKALGYQ LLRQTVQSVF PEVNITAPVT SIGNTDSRFF TNLTTGIYRF YPIYIQPEDF KRIHGVNEKI SVQAYETQVK FIFELIQNAD TDQEPVSHLH KL</p>
Characteristics:	Human PM20D1 full-length ORF (AAH39170.1, 1 a.a. - 502 a.a.) recombinant protein with GST-tag at N-terminal.

Product Details

Purification: in vitro wheat germ expression system

Target Details

Target: PM20D1

Alternative Name: PM20D1 ([PM20D1 Products](#))

Background: Full Gene Name: peptidase M20 domain containing 1
Synonyms: Cps1,FLJ32569

Gene ID: 148811

Application Details

Application Notes: Optimal working dilution should be determined by the investigator.

Comment: Preparation method: in vitro, wheat germ expression system
Product Quality tested by: 12.5% SDS-PAGE Stained with Coomassie Blue.

Restrictions: For Research Use only

Handling

Buffer: 50 mM Tris-HCl, 10 mM reduced Glutathione, pH =8.0 in the elution buffer.

Handling Advice: Aliquot to avoid repeated freezing and thawing.

Storage: -80 °C

Storage Comment: Best use within three months from the date of receipt of this protein.

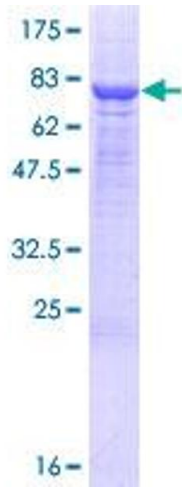


Image 1.