



[Go to Product page](#)

Datasheet for ABIN1315543

PMS2L5 Protein (AA 1-134) (GST tag)

1 Image

Overview

Quantity:	10 µg
Target:	PMS2L5 (PMS2P5)
Protein Characteristics:	AA 1-134
Origin:	Human
Source:	Wheat germ
Protein Type:	Recombinant
Purification tag / Conjugate:	This PMS2L5 protein is labelled with GST tag.
Application:	ELISA, Western Blotting (WB), Affinity Purification (AP), Antibody Array (AA)

Product Details

Purpose:	PMS2L5 (Human) Recombinant Protein (P01)
Sequence:	MWGRRRKLRR LNDVTISTCH VSAKVGTRLV FDHDGKIIQK TPYPHPRGTT VSVKQLFSTL PVRHKEFQRN IKKKRACFPF AFCRDCQFLE GSPAMLVQP AKLTPRSTPP HPCSLEDNVI TVFSSVKNGP GSSR
Characteristics:	Human PMS2L5 full-length ORF (NP_777590.1, 1 a.a. - 134 a.a.) recombinant protein with GST-tag at N-terminal.
Purification:	in vitro wheat germ expression system

Target Details

Target:	PMS2L5 (PMS2P5)
Alternative Name:	PMS2L5 (PMS2P5 Products)

Target Details

Background: Gene: postmeiotic segregation increased 2-like 5
Synonyms: MGC34222, PMS7

Gene ID: 5383

NCBI Accession: [NM_174930](#)

Application Details

Application Notes: Optimal working dilution should be determined by the investigator.

Restrictions: For Research Use only

Handling

Buffer: 50 mM Tris-HCl, 10 mM reduced Glutathione, pH =8.0 in the elution buffer.

Handling Advice: Aliquot to avoid repeated freezing and thawing.

Storage: -80 °C

Storage Comment: Best use within three months from the date of receipt of this protein.

Images

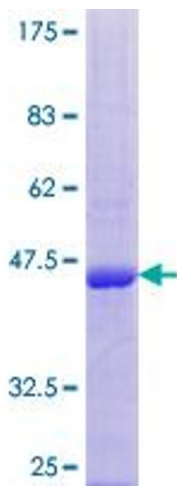


Image 1.