



[Go to Product page](#)

Datasheet for ABIN1315550
PNKP Protein (AA 1-521) (GST tag)

1 Image

Overview

Quantity:	10 µg
Target:	PNKP
Protein Characteristics:	AA 1-521
Origin:	Human
Source:	Wheat germ
Protein Type:	Recombinant
Purification tag / Conjugate:	This PNKP protein is labelled with GST tag.
Application:	ELISA, Western Blotting (WB), Affinity Purification (AP), Antibody Array (AA)

Product Details

Purpose:	PNKP (Human) Recombinant Protein (P01)
Sequence:	MGEVEAPGRL WLESPGGAP PIFLPSDGQA LVLGRGPLTQ VTRKCSRTQ VELVADPETR TVAVKQLGVN PSTTGTQELK PGLEGLGSLGVT DTLVNLGLH PLTLRWEETR TPESQPDTPP GTPLVSQDEK RDAELPKKRM RKSNGWENL EKLLVFTAAG VKPQKQVAGF DLDGTLITTR SGKVFPGPS DWRILYPEIP RKLRELEAEG YKLVIFTNQM SIGRGKLP AE EFKAKVEAVV EKLGVFPQVL VATHAGLYRK PVTGMWDHLQ EQANDGTPIS IGDSIFVGDA AGRPANWAPG RKKKDFSCAD RLFALNLGLP FATPEEFFLK WPAAGFELPA FDPRTVSRSG PLCLPESRAL LSASPEVVVA VGFPGAGKST FLKKHLVSAG YVHVNRDTLG SWQRCVTTCE TALKQGKRVA IDNTNPDAAS RARYVQCARA AGVPCRCFLF TATLEQARHN NRFREMTDSS HIPVSDMVMY GYRKQFEAPT LAEGFSAILE IPFRLWVEPR LGRLYCQFSE G
Characteristics:	Human PNKP full-length ORF (NP_009185.2, 1 a.a. - 521 a.a.) recombinant protein with GST-tag at N-terminal.

Product Details

Purification: in vitro wheat germ expression system

Target Details

Target: PNKP

Alternative Name: PNKP ([PNKP Products](#))

Background: Full Gene Name: polynucleotide kinase 3'-phosphatase
Synonyms: PNK

Gene ID: 11284

NCBI Accession: [NM_007254](#)

Pathways: [DNA Damage Repair](#), [Nucleotide Phosphorylation](#)

Application Details

Application Notes: Optimal working dilution should be determined by the investigator.

Comment: Preparation method: in vitro, wheat germ expression system
Product Quality tested by: 12.5% SDS-PAGE Stained with Coomassie Blue.

Restrictions: For Research Use only

Handling

Buffer: 50 mM Tris-HCl, 10 mM reduced Glutathione, pH =8.0 in the elution buffer.

Handling Advice: Aliquot to avoid repeated freezing and thawing.

Storage: -80 °C

Storage Comment: Best use within three months from the date of receipt of this protein.

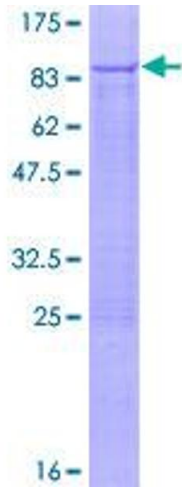


Image 1.