



[Go to Product page](#)

Datasheet for ABIN1315554

PNLDC1 Protein (AA 400-499) (GST tag)

1 Image

Overview

Quantity:	10 µg
Target:	PNLDC1
Protein Characteristics:	AA 400-499
Origin:	Human
Source:	Wheat germ
Protein Type:	Recombinant
Purification tag / Conjugate:	This PNLDC1 protein is labelled with GST tag.
Application:	ELISA, Western Blotting (WB), Affinity Purification (AP), Antibody Array (AA)

Product Details

Purpose:	PNLDC1 (Human) Recombinant Protein (Q01)
Sequence:	LIRAGVPKIN FSGPDYPSIR PPILILSVKR WPGVSEQQVY HKFQNLCKFD VRRLTRSQFL LLTNKFKDAR NILKEYRDHP TLCISLYRYW RHSPNVNCLL
Characteristics:	Human PNLDC1 partial ORF (NP_775787, 400 a.a. - 499 a.a.) recombinant protein with GST-tag at N-terminal.
Purification:	in vitro wheat germ expression system

Target Details

Target:	PNLDC1
Alternative Name:	PNLDC1 (PNLDC1 Products)

Target Details

Background:	Full Gene Name: poly(A)-specific ribonuclease (PARN)-like domain containing 1 Synonyms: FLJ40240,MGC138451,dJ195P10.2
Gene ID:	154197
NCBI Accession:	NM_173516

Application Details

Application Notes:	Optimal working dilution should be determined by the investigator.
Comment:	Preparation method: in vitro, wheat germ expression system Product Quality tested by: 12.5% SDS-PAGE Stained with Coomassie Blue.
Restrictions:	For Research Use only

Handling

Buffer:	50 mM Tris-HCl, 10 mM reduced Glutathione, pH =8.0 in the elution buffer.
Handling Advice:	Aliquot to avoid repeated freezing and thawing.
Storage:	-80 °C
Storage Comment:	Best use within three months from the date of receipt of this protein.

Images

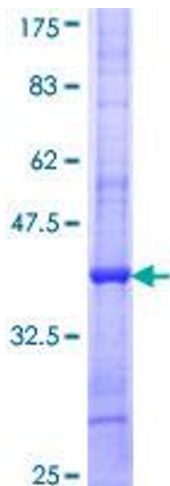


Image 1.