



[Go to Product page](#)

Datasheet for ABIN1315563

## PNMA1 Protein (AA 1-353) (GST tag)

### 1 Image

#### Overview

Quantity:	10 µg
Target:	PNMA1
Protein Characteristics:	AA 1-353
Origin:	Human
Source:	Wheat germ
Protein Type:	Recombinant
Purification tag / Conjugate:	This PNMA1 protein is labelled with GST tag.
Application:	ELISA, Western Blotting (WB), Affinity Purification (AP), Antibody Array (AA)

#### Product Details

Purpose:	PNMA1 (Human) Recombinant Protein (P01)
Sequence:	MAMTLLLEDWC RGMDVNSQRA LLVWGIPVNC DEAEIEETLQ AAMPQVSYRM LGRMFWREEN AKAALLELTG AVDYAAIPRE MPGKGGVWKV LFKPPTSDAE FLERLHLFLA REGWTVQDVA RVLGFQNPPT TPGPEMPAEM LNYILDNVIQ PLVESIWYKR LTLFSGRDIP GPGEETFDPW LEHTNEVLEE WQVSDVEKRR RLMESLRGPA ADVIRILKSN NPAITTAECL KALEQVFGSV ESSRDAQIKF LNTYQNPGEK LSAYVIRLEP LLQKVVEKGA IDKDNVNQAR LEQVIAGANH SGAIRRQLWL TGAGEGPAPN LFQLLVQIRE EEAKEEEEEEA EATLLQLGLE GHF
Characteristics:	Human PNMA1 full-length ORF ( NP_006020.4, 1 a.a. - 353 a.a.) recombinant protein with GST-tag at N-terminal.
Purification:	in vitro wheat germ expression system

## Target Details

Target:	PNMA1
Alternative Name:	PNMA1 ( <a href="#">PNMA1 Products</a> )
Background:	Full Gene Name: paraneoplastic antigen MA1 Synonyms: MA1
Gene ID:	9240
NCBI Accession:	<a href="#">NM_006029</a>

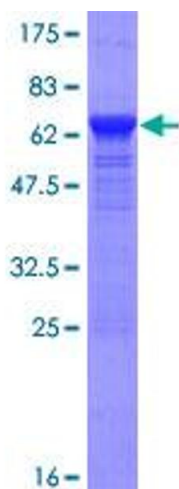
## Application Details

Application Notes:	Optimal working dilution should be determined by the investigator.
Comment:	Preparation method: in vitro, wheat germ expression system Product Quality tested by: 12.5% SDS-PAGE Stained with Coomassie Blue.
Restrictions:	For Research Use only

## Handling

Buffer:	50 mM Tris-HCl, 10 mM reduced Glutathione, pH =8.0 in the elution buffer.
Handling Advice:	Aliquot to avoid repeated freezing and thawing.
Storage:	-80 °C
Storage Comment:	Best use within three months from the date of receipt of this protein.

## Images



**Image 1.**