



[Go to Product page](#)

Datasheet for ABIN1315570

PNMA6A Protein (AA 1-399) (GST tag)

1 Image

Overview

Quantity:	25 µg
Target:	PNMA6A
Protein Characteristics:	AA 1-399
Origin:	Human
Source:	Wheat germ
Protein Type:	Recombinant
Purification tag / Conjugate:	This PNMA6A protein is labelled with GST tag.
Application:	ELISA, Western Blotting (WB), Affinity Purification (AP), Antibody Array (AA)

Product Details

Purpose:	PNMA6A (Human) Recombinant Protein (P01)
Sequence:	MAVTMLQDWC RWMGVNARRG LLILGIPEDC DDAEFQESLE AALRPMGHFT VLGKAFREED NATAALVELD REVNYALVPR EIPGTGGPWN VVFVPRCSGE EFLGLGRVFH FPEQEQMVE SVAGALGVGL RRVCWLRISIG QAVQPWVEAV RCQSLGVFSG RDQPAPGEES FEVWLDHTTE MLHWVQGVSE RERRRRLLEG LRGTALQLVH ALLAENPART AQDCLAALAQ VFGDNESQAT IRVKCLTAQQ QSGERLSAFV LRLEVLLQKA MEKEALARAS ADRVRLRQML TRAHLTEPLD EALRKLRMAG RSPSFLEMLG LVRESEAWEA SLARSVRAQT QEGAGARAGA QAVARASTKV EAVPGGPGRE PEGLLQAGGQ EAEELLQEGL KPVLEECDN
Characteristics:	Human PNMA6A full-length ORF (NP_116271.1, 1 a.a. - 399 a.a.) recombinant protein with GST-tag at N-terminal.
Purification:	in vitro wheat germ expression system

Target Details

Target:	PNMA6A
Alternative Name:	PNMA6A (PNMA6A Products)
Background:	Full Gene Name: paraneoplastic antigen like 6A Synonyms: MGC15827
Gene ID:	84968
NCBI Accession:	NM_032882

Application Details

Application Notes:	Optimal working dilution should be determined by the investigator.
Comment:	Preparation method: in vitro, wheat germ expression system Product Quality tested by: 12.5% SDS-PAGE Stained with Coomassie Blue.
Restrictions:	For Research Use only

Handling

Buffer:	50 mM Tris-HCl, 10 mM reduced Glutathione, pH =8.0 in the elution buffer.
Handling Advice:	Aliquot to avoid repeated freezing and thawing.
Storage:	-80 °C
Storage Comment:	Best use within three months from the date of receipt of this protein.

Images

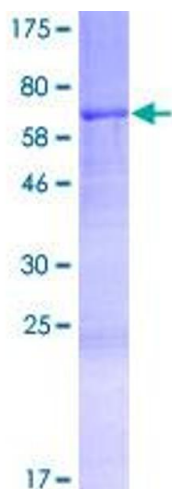


Image 1.