



[Go to Product page](#)

Datasheet for ABIN1315579

PN01 Protein (AA 1-252) (GST tag)

1 Image

Overview

Quantity:	10 µg
Target:	PN01
Protein Characteristics:	AA 1-252
Origin:	Human
Source:	Wheat germ
Protein Type:	Recombinant
Purification tag / Conjugate:	This PN01 protein is labelled with GST tag.
Application:	ELISA, Western Blotting (WB), Affinity Purification (AP), Antibody Array (AA)

Product Details

Purpose:	PN01 (Human) Recombinant Protein (P01)
Sequence:	MESEMETQSA RAEEGFTQVT RKGGRRAKRR QAEQLSAAGE GGDAGRMDTE EARPAKRPVF PPLCGDGLLS GKEETRKIPV PANRYTPLKE NWMKIFTPIV EHLGLQIRFN LKSRNVEIRT CKETKDVSAL TKAADFVKAF ILGFQVEDAL ALIRLDDLFL ESFEITDVKP LKGDHLSRAI GRIAGKGGKT KFTIENVTRT RIVLADVKVH ILGSFQNIKM ARTAICNLIL GNPPSKVYGN IRAVASRSAD RF
Characteristics:	Human PN01 full-length ORF (NP_064528.1, 1 a.a. - 252 a.a.) recombinant protein with GST-tag at N-terminal.
Purification:	in vitro wheat germ expression system

Target Details

Target:	PN01
Alternative Name:	PN01 (PN01 Products)
Background:	Full Gene Name: partner of NOB1 homolog (<i>S. cerevisiae</i>) Synonyms: KHRBP1
Gene ID:	56902
NCBI Accession:	NM_020143

Application Details

Application Notes:	Optimal working dilution should be determined by the investigator.
Comment:	Preparation method: in vitro, wheat germ expression system Product Quality tested by: 12.5% SDS-PAGE Stained with Coomassie Blue.
Restrictions:	For Research Use only

Handling

Buffer:	50 mM Tris-HCl, 10 mM reduced Glutathione, pH =8.0 in the elution buffer.
Handling Advice:	Aliquot to avoid repeated freezing and thawing.
Storage:	-80 °C
Storage Comment:	Best use within three months from the date of receipt of this protein.

Images

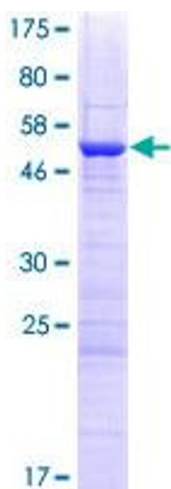


Image 1.