



[Go to Product page](#)

Datasheet for ABIN1315620

POLB Protein (AA 1-335) (GST tag)

1 Image

Overview

Quantity:	10 µg
Target:	POLB
Protein Characteristics:	AA 1-335
Origin:	Human
Source:	Wheat germ
Protein Type:	Recombinant
Purification tag / Conjugate:	This POLB protein is labelled with GST tag.
Application:	Western Blotting (WB), ELISA, Affinity Purification (AP), Antibody Array (AA)

Product Details

Purpose:	POLB (Human) Recombinant Protein (P01)
Sequence:	MSKRKAPQET LGGITDMLT ELANFEKNVS QAIHKYNAYR KAASVIKYP HIKKSGAEAK KLPGVGKIA EKIDEFLATG KLRKLEKIRQ DDTSSSINFL TRVSGIGPSA ARKFVDEGIK TLEDLRKNED KLNHHQRIGL KYFGDFEKRI PREEMLQMQD IVLNEVKKVD SEYIATVCGS FRRGAESSGD MDVLLTHPSF TSESTKQPKL LHQVVEQLQK VHFITDTLSK GETKFMGVCQ LPSKNDEKEY PHRRIDIRLI PKDQYYCGVL YFTGSDIFNK NMRAHALEKG FTINEYTIRP LGVTGVAGEP LPVDSEKDIF DYIQWKYREP KDRSE
Characteristics:	Human POLB full-length ORF (AAI06910.1, 1 a.a. - 335 a.a.) recombinant protein with GST-tag at N-terminal.
Purification:	in vitro wheat germ expression system

Target Details

Target:	POLB
Alternative Name:	POLB (POLB Products)
Background:	Full Gene Name: polymerase (DNA directed), beta Synonyms: MGC125976
Gene ID:	5423
Pathways:	DNA Damage Repair

Application Details

Application Notes:	Optimal working dilution should be determined by the investigator.
Comment:	Preparation method: in vitro, wheat germ expression system Product Quality tested by: 12.5% SDS-PAGE Stained with Coomassie Blue.
Restrictions:	For Research Use only

Handling

Buffer:	50 mM Tris-HCl, 10 mM reduced Glutathione, pH =8.0 in the elution buffer.
Handling Advice:	Aliquot to avoid repeated freezing and thawing.
Storage:	-80 °C
Storage Comment:	Best use within three months from the date of receipt of this protein.

Images

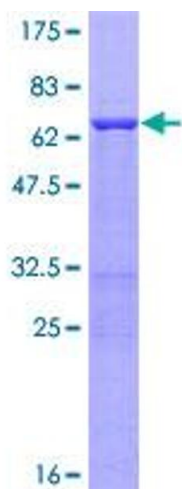


Image 1.