



[Go to Product page](#)

Datasheet for ABIN1315657

## POLQ Protein (AA 2572-2680) (GST tag)

### 1 Image

#### Overview

Quantity:	2 µg
Target:	POLQ
Protein Characteristics:	AA 2572-2680
Origin:	Human
Source:	Wheat germ
Protein Type:	Recombinant
Purification tag / Conjugate:	This POLQ protein is labelled with GST tag.
Application:	Affinity Purification (AP), Antibody Array (AA), ELISA, Western Blotting (WB)

#### Product Details

Purpose:	POLQ (Human) Recombinant Protein (Q01)
Sequence:	DGFVQTLGR RRYLPGIKDN NPYRKAHAER QAINIVQGS AADIVKIATV NIKQQLETFH STFKSHGHRE GMLQSDRTGL SRKRKLQGMF CPIRGGFFIL QLHDELLYE
Characteristics:	Human POLQ partial ORF ( NP_006587, 2572 a.a. - 2680 a.a.) recombinant protein with GST-tag at N-terminal.
Purification:	in vitro wheat germ expression system

#### Target Details

Target:	POLQ
Alternative Name:	POLQ ( <a href="#">POLQ Products</a> )

## Target Details

Background:	Full Gene Name: polymerase (DNA directed), theta Synonyms: DKFZp781A0112,POLH,PRO0327
Gene ID:	10721
NCBI Accession:	<a href="#">NM_006596</a>

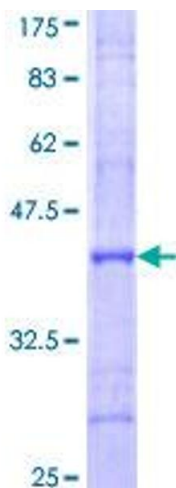
## Application Details

Application Notes:	Optimal working dilution should be determined by the investigator.
Comment:	Preparation method: in vitro, wheat germ expression system Product Quality tested by: 12.5% SDS-PAGE Stained with Coomassie Blue.
Restrictions:	For Research Use only

## Handling

Buffer:	50 mM Tris-HCl, 10 mM reduced Glutathione, pH =8.0 in the elution buffer.
Handling Advice:	Aliquot to avoid repeated freezing and thawing.
Storage:	-80 °C
Storage Comment:	Best use within three months from the date of receipt of this protein.

## Images



**Image 1.**