



[Go to Product page](#)

Datasheet for ABIN1315698

POLR2L Protein (AA 1-67) (GST tag)

1 Image

Overview

Quantity:	10 µg
Target:	POLR2L
Protein Characteristics:	AA 1-67
Origin:	Human
Source:	Wheat germ
Protein Type:	Recombinant
Purification tag / Conjugate:	This POLR2L protein is labelled with GST tag.
Application:	ELISA, Western Blotting (WB), Affinity Purification (AP), Antibody Array (AA)

Product Details

Purpose:	POLR2L (Human) Recombinant Protein (P01)
Sequence:	MIIPVRCFTC GKIVGNKWEA YLGLLQAEYT EGDALDALGL KRYCCRRMLL AHVDLIEKLL NYAPLEK
Characteristics:	Human POLR2L full-length ORF (AAH18649, 1 a.a. - 67 a.a.) recombinant protein with GST-tag at N-terminal.
Purification:	in vitro wheat germ expression system

Target Details

Target:	POLR2L
Alternative Name:	POLR2L (POLR2L Products)

Target Details

Background:	Full Gene Name: polymerase (RNA) II (DNA directed) polypeptide L, 7.6 kDa Synonyms: RBP10,RPABC5,RPB10,RPB10beta,RPB7.6,hRPB7.6,hsRPB10b
Gene ID:	5441
Pathways:	Regulatory RNA Pathways

Application Details

Application Notes:	Optimal working dilution should be determined by the investigator.
Comment:	Preparation method: in vitro, wheat germ expression system Product Quality tested by: 12.5% SDS-PAGE Stained with Coomassie Blue.
Restrictions:	For Research Use only

Handling

Buffer:	50 mM Tris-HCl, 10 mM reduced Glutathione, pH =8.0 in the elution buffer.
Handling Advice:	Aliquot to avoid repeated freezing and thawing.
Storage:	-80 °C
Storage Comment:	Best use within three months from the date of receipt of this protein.

Images

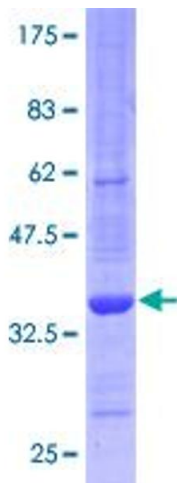


Image 1.