



[Go to Product page](#)

Datasheet for ABIN1315700

POLR3A Protein (AA 111-209) (GST tag)

1 Image

Overview

Quantity:	2 µg
Target:	POLR3A
Protein Characteristics:	AA 111-209
Origin:	Human
Source:	Wheat germ
Protein Type:	Recombinant
Purification tag / Conjugate:	This POLR3A protein is labelled with GST tag.
Application:	Western Blotting (WB), ELISA, Affinity Purification (AP), Antibody Array (AA)

Product Details

Purpose:	POLR3A (Human) Recombinant Protein (Q01)
Sequence:	TCCHIMLSQE EKKQFLDYLK RPGLTYLQKR GLKKKISDKC RKKNICHHC G AFNGTVKKCG LLKIIHEKYK TNKKVVDPIV SNFLQSFETA IEHNKEVEP
Characteristics:	Human POLR3A partial ORF (NP_008986, 111 a.a. - 209 a.a.) recombinant protein with GST-tag at N-terminal.
Purification:	in vitro wheat germ expression system

Target Details

Target:	POLR3A
Alternative Name:	POLR3A (POLR3A Products)

Target Details

Background:	Gene: polymerase (RNA) III (DNA directed) polypeptide A, 155kDa Synonyms: RPC1, RPC155, hRPC155
Gene ID:	11128
NCBI Accession:	NM_007055

Application Details

Application Notes:	Optimal working dilution should be determined by the investigator.
Restrictions:	For Research Use only

Handling

Buffer:	50 mM Tris-HCl, 10 mM reduced Glutathione, pH =8.0 in the elution buffer.
Handling Advice:	Aliquot to avoid repeated freezing and thawing.
Storage:	-80 °C
Storage Comment:	Best use within three months from the date of receipt of this protein.

Images

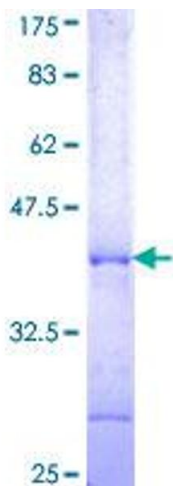


Image 1.