



Datasheet for ABIN1315709

**POLR3D Protein (AA 1-398) (GST tag)**



[Go to Product page](#)

1 Image

Overview

Quantity:	25 µg
Target:	POLR3D
Protein Characteristics:	AA 1-398
Origin:	Human
Source:	Wheat germ
Protein Type:	Recombinant
Purification tag / Conjugate:	This POLR3D protein is labelled with GST tag.
Application:	ELISA, Western Blotting (WB), Affinity Purification (AP), Antibody Array (AA)

Product Details

Purpose:	POLR3D (Human) Recombinant Protein (P01)
Sequence:	MSEGNAAGEP STPGGPRPLL TGARGLIGRR PAPPLTPGRL PSIRSRDLTL GGVKKKTFTP NIISRKIKEE PKEEVTVKKE KRERDRDRQR EGHGRGRGRP EVIQSHSIFE QGPAEMMKKK GNWDKTVDVS DMGPSHIINI KKEKRETDEE TKQILRMLEK DDFLDDPGLR NDTRNMPVQL PLAHSGLWLFK EENDEPDVKP WLAGPKEDM EVDIPAVKVK EEPREDEEEEA KMKAPPKAAR KTPGLPKDVS VAELLRELSL TKEEELLFLQ LPDTLPGQPP TQDIKPIKTE VQGEDGQVVL IKQEKDREAK LAENACTLAD LTEGQVGKLL IRKSGRVQLL LGKVTLDVTM GTACSFLQEL VSVGLGDSRT GEMTVLGHVK HKLVCSPDFE SLLDHKHR
Characteristics:	Human POLR3D full-length ORF ( NP_001713.2, 1 a.a. - 398 a.a.) recombinant protein with GST-tag at N-terminal.
Purification:	in vitro wheat germ expression system

## Target Details

Target:	POLR3D
Alternative Name:	POLR3D ( <a href="#">POLR3D Products</a> )
Background:	Full Gene Name: polymerase (RNA) III (DNA directed) polypeptide D, 44 kDa Synonyms: BN51T, RPC4, RPC53, TSBN51
Gene ID:	661
NCBI Accession:	<a href="#">NM_001722</a>

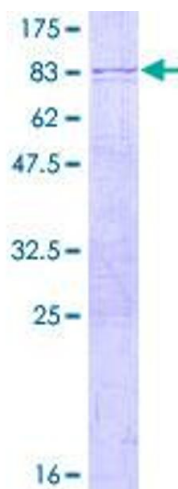
## Application Details

Application Notes:	Optimal working dilution should be determined by the investigator.
Comment:	Preparation method: in vitro, wheat germ expression system Product Quality tested by: 12.5% SDS-PAGE Stained with Coomassie Blue.
Restrictions:	For Research Use only

## Handling

Buffer:	50 mM Tris-HCl, 10 mM reduced Glutathione, pH =8.0 in the elution buffer.
Handling Advice:	Aliquot to avoid repeated freezing and thawing.
Storage:	-80 °C
Storage Comment:	Best use within three months from the date of receipt of this protein.

## Images



**Image 1.**