



[Go to Product page](#)

Datasheet for ABIN1315714

## POLR3F Protein (AA 1-316) (GST tag)

### 1 Image

#### Overview

Quantity:	10 µg
Target:	POLR3F
Protein Characteristics:	AA 1-316
Origin:	Human
Source:	Wheat germ
Protein Type:	Recombinant
Purification tag / Conjugate:	This POLR3F protein is labelled with GST tag.
Application:	ELISA, Western Blotting (WB), Affinity Purification (AP), Antibody Array (AA)

#### Product Details

Purpose:	POLR3F (Human) Recombinant Protein (P01)
Sequence:	MAEVKVKVQP PDADPVEIEN RIELCHQFP HGITDQVIQN EMPHIEAQR AVAINRLLSM GQLDLLRSNT GLLYRIKDSQ NAGKMKGSDN QEKLVIYQIE DAGNKGIWSR DIRYKSNLPL TEINKILKNL ESKKLIKAVK SVAASKKKVY MLYNLQPDRS VTGGAWYSDQ DFESEFVEVL NQQCFKFLQS KAETARESKQ NPMIQRNSSF ASSHEVWKYI CELGISKVEL SMEDIETILN TLIYDGKIVEM TIIAAKEGTV GSVDGHEMKLY RAVNPIIPT GLVRAPCGLC PVFDDCHEGG EISPSNCIYM TEWLEF
Characteristics:	Human POLR3F full-length ORF ( NP_006457.2, 1 a.a. - 316 a.a.) recombinant protein with GST-tag at N-terminal.
Purification:	in vitro wheat germ expression system

## Target Details

Target:	POLR3F
Alternative Name:	POLR3F ( <a href="#">POLR3F Products</a> )
Background:	Full Gene Name: polymerase (RNA) III (DNA directed) polypeptide F, 39 kDa Synonyms: MGC13517, RPC39, RPC6
Gene ID:	10621
NCBI Accession:	<a href="#">NM_006466</a>

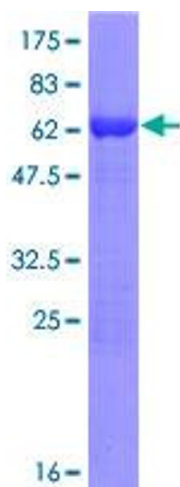
## Application Details

Application Notes:	Optimal working dilution should be determined by the investigator.
Comment:	Preparation method: in vitro, wheat germ expression system Product Quality tested by: 12.5% SDS-PAGE Stained with Coomassie Blue.
Restrictions:	For Research Use only

## Handling

Buffer:	50 mM Tris-HCl, 10 mM reduced Glutathione, pH =8.0 in the elution buffer.
Handling Advice:	Aliquot to avoid repeated freezing and thawing.
Storage:	-80 °C
Storage Comment:	Best use within three months from the date of receipt of this protein.

## Images



**Image 1.**