

Datasheet for ABIN1315722

POLRMT Protein (AA 1121-1230) (GST tag)



[Go to Product page](#)

1 Image

Overview

Quantity:	10 µg
Target:	POLRMT
Protein Characteristics:	AA 1121-1230
Origin:	Human
Source:	Wheat germ
Protein Type:	Recombinant
Purification tag / Conjugate:	This POLRMT protein is labelled with GST tag.
Application:	ELISA, Western Blotting (WB), Affinity Purification (AP), Antibody Array (AA)

Product Details

Purpose:	POLRMT (Human) Recombinant Protein (Q01)
Sequence:	PNFIHSLDSS HMMLTALHCY RKGLTFVSVH DCYWTHAADV SVMNQVCREQ FVRLHSEPIL QDLSRFLVKR FCSEPQKILE ASQLKETLQA VPKPGAFDLE QVKRSTYFFS
Characteristics:	Human POLRMT partial ORF (NP_005026, 1121 a.a. - 1230 a.a.) recombinant protein with GST-tag at N-terminal.
Purification:	in vitro wheat germ expression system

Target Details

Target:	POLRMT
Alternative Name:	POLRMT (POLRMT Products)

Target Details

Background:	Full Gene Name: polymerase (RNA) mitochondrial (DNA directed) Synonyms: APOLMT,MTRNAP,MTRPOL,h-mtRPOL
Gene ID:	5442
NCBI Accession:	NM_005035

Application Details

Application Notes:	Optimal working dilution should be determined by the investigator.
Comment:	Preparation method: in vitro, wheat germ expression system Product Quality tested by: 12.5% SDS-PAGE Stained with Coomassie Blue.
Restrictions:	For Research Use only

Handling

Buffer:	50 mM Tris-HCl, 10 mM reduced Glutathione, pH =8.0 in the elution buffer.
Handling Advice:	Aliquot to avoid repeated freezing and thawing.
Storage:	-80 °C
Storage Comment:	Best use within three months from the date of receipt of this protein.

Images

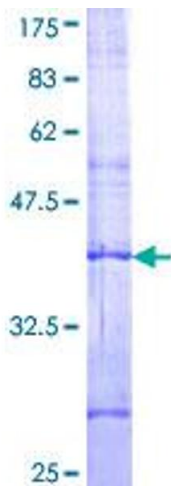


Image 1.