

Datasheet for ABIN1315727

PAP Associated Domain Containing 7 (PAPD7) (AA 2-110) protein (GST tag)



[Go to Product page](#)

1 Image

Overview

Quantity:	10 µg
Target:	PAP Associated Domain Containing 7 (PAPD7)
Protein Characteristics:	AA 2-110
Origin:	Human
Source:	Wheat germ
Protein Type:	Recombinant
Purification tag / Conjugate:	GST tag
Application:	ELISA, Western Blotting (WB), Affinity Purification (AP), Antibody Array (AA)

Product Details

Purpose:	POLS (Human) Recombinant Protein (Q01)
Sequence:	SPCPPEEAAMR REVVKRIETV VKDLWPTADV QIFGSFSTGL YLPTSDIDL VFGKWERPPL QLLEQALRKH NVAEPCSIKV LDKATVPIIK LTDQETEVKV DISFNMETG
Characteristics:	Human POLS partial ORF (NP_008930, 2 a.a. - 110 a.a.) recombinant protein with GST-tag at N-terminal.
Purification:	in vitro wheat germ expression system

Target Details

Target:	PAP Associated Domain Containing 7 (PAPD7)
Alternative Name:	POLS (PAPD7 Products)

Target Details

Target Type:	Viral Protein
Background:	Full Gene Name: polymerase (DNA directed) sigma Synonyms: LAK-1,POLK,TRF4,TRF4-1
Gene ID:	11044
NCBI Accession:	NM_006999

Application Details

Application Notes:	Optimal working dilution should be determined by the investigator.
Comment:	Preparation method: in vitro, wheat germ expression system Product Quality tested by: 12.5% SDS-PAGE Stained with Coomassie Blue.
Restrictions:	For Research Use only

Handling

Buffer:	50 mM Tris-HCl, 10 mM reduced Glutathione, pH =8.0 in the elution buffer.
Handling Advice:	Aliquot to avoid repeated freezing and thawing.
Storage:	-80 °C
Storage Comment:	Best use within three months from the date of receipt of this protein.

Images

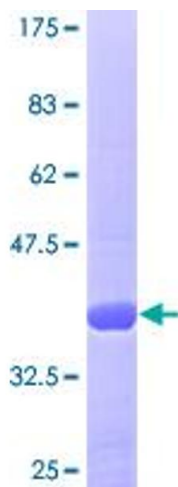


Image 1.