



Datasheet for ABIN1315770

## POTED Protein (AA 485-584) (GST tag)



[Go to Product page](#)

### 1 Image

#### Overview

Quantity:	10 µg
Target:	POTED
Protein Characteristics:	AA 485-584
Origin:	Human
Source:	Wheat germ
Protein Type:	Recombinant
Purification tag / Conjugate:	This POTED protein is labelled with GST tag.
Application:	ELISA, Western Blotting (WB), Affinity Purification (AP), Antibody Array (AA)

#### Product Details

Purpose:	ANKRD21 (Human) Recombinant Protein (Q01)
Sequence:	NTGISQDEIL TNKQKQIEVA EQKMNSELSL SHKKEEDLLR ENSVLQEEIA VLRLELDETK HQNQLRENKI LEEIESVKEK TDKLLRAMQL NEEALTKTNI
Characteristics:	Human ANKRD21 partial ORF ( NP_778146.1, 485 a.a. - 584 a.a.) recombinant protein with GST-tag at N-terminal.
Purification:	in vitro wheat germ expression system

#### Target Details

Target:	POTED
Alternative Name:	POTED ( <a href="#">POTED Products</a> )

## Target Details

Background:	Full Gene Name: POTE ankyrin domain family, member D Synonyms: A26B3,ANKRD21,POTE,POTE-21,POTE21
Gene ID:	317754
NCBI Accession:	<a href="#">NM_174981</a>

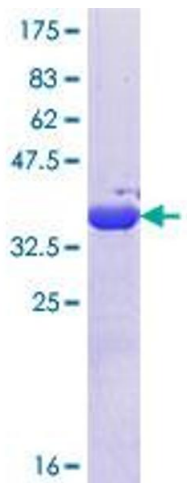
## Application Details

Application Notes:	Optimal working dilution should be determined by the investigator.
Comment:	Preparation method: in vitro, wheat germ expression system Product Quality tested by: 12.5% SDS-PAGE Stained with Coomassie Blue.
Restrictions:	For Research Use only

## Handling

Buffer:	50 mM Tris-HCl, 10 mM reduced Glutathione, pH =8.0 in the elution buffer.
Handling Advice:	Aliquot to avoid repeated freezing and thawing.
Storage:	-80 °C
Storage Comment:	Best use within three months from the date of receipt of this protein.

## Images



**Image 1.**